



HYBRID STEPPING MOTORS

Step degrees 1.8°
Cable types

Transmotec sell a broad range of high quality hybrid stepping motors in standard and customized configurations. Transmotec is the ideal supplier source especially to instrument and apparatus builders. We keep a high number of motors in stock for immediate delivery.

Customizations include:

- ✓ Customized harness
- ✓ Shaft configuration
- ✓ Winding configuration
- ✓ And more...

TABLE OF CONTENTS

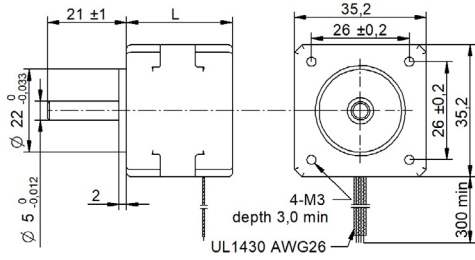
Transmotec part name	Step degrees	Flange mm	Length mm	Holding torque Nm	Current phase A	Page
SHW2832-18-067	1.8	28	32.0	0.06	0.67	1.
SHW2845-18-067	1.8	28	45.0	0.09	0.67	1.
SHW2851-18-067	1.8	28	51.0	0.12	0.67	1.
SHW3526-18-028	1.8	35	26.0	0.07	0.28	2.
SHW3528-18-050	1.8	35	28.0	0.10	0.50	2.
SHW3536-18-100	1.8	35	36.0	0.14	1.00	2.
SHW3920-18-040	1.8	39	20.0	0.08	0.40	3.
SHW3931-18-030	1.8	39	31.0	0.18	0.30	3.
SHW3934-18-040	1.8	39	34.0	0.21	0.40	3.
SHW3938-18-050	1.8	39	38.0	0.36	0.50	3.
SHW4226-18-040	1.8	42	26.0	0.17	0.40	4.
SHW4234-18-133	1.8	42	33.5	0.22	1.33	4.
SHW4240-18-168	1.8	42	39.5	0.36	1.68	4.
SHW4248-18-168	1.8	42	47.5	0.44	1.68	4.
DSH-200	Stepper motor driver				2.00	10
DSH-300	Stepper motor driver				3.00	11.
DSH-600	Stepper motor driver				6.00	12.
LRS	Power supplies AC-DC					External link

TABLE OF CONTENTS

Transmotec part name	Step degrees	Flange mm	Length mm	Holding torque Nm	Current phase A	Page
SHW57115-18-280	1.8	57	115.0	3.00	2.80	5.
SHW5740-18-280	1.8	57	40.0	0.55	2.80	5.
SHW5750-18-280	1.8	57	50.0	1.00	2.80	5.
SHW5775-18-280	1.8	57	75.0	1.89	2.80	5.
SHW6047-18-280	1.8	60	47.0	1.10	2.80	6.
SHW6056-18-280	1.8	60	56.0	1.65	2.80	6.
SHW6067-18-280	1.8	60	67.0	2.10	2.80	6.
SHW6088-18-280	1.8	60	88.0	3.00	2.80	6.
SHW8694-18-280	1.8	86	94.0	4.80	2.80	7.
SHW8665-18-400	1.8	86	65.0	3.50	4.00	8.
SHW8680-18-600	1.8	86	80.0	4.50	6.00	8.
SHW86118-18-600	1.8	86	118.0	8.50	6.00	8.
SHW86156-18-600	1.8	86	156.0	12.00	0.63	8.
SHW110150-18-650	1.8	110	150.0	21.00	6.50	9.
SHW110201-18-800	1.8	110	201.0	28.00	8.00	9.
SHW11099-18-550	1.8	110	99.0	11.20	5.50	9.
DSH-200	Stepper motor driver				2.00	10.
DSH-300	Stepper motor driver				2.00	11.
DSH-600	Stepper motor driver				2.00	12.
LRS	Power supplies AC-DC					External link

SHW28-18 Series cable □ 28 mm

DRAWING (mm)



PHOTO



MODEL NAME DESIGNATION

SHW3520 - STEP ANGLE - CURRENT

Example: SHW35-09-100



OPTIONS MOTOR DRIVERS AND POWER SUPPLIES



MOTOR FEATURES

Step angle	1.8
Step angle accuracy	± 5% full step no load
Shaft material	X8CrNiS18-9 SUS303
Bearing type	Ball bearing
Radial play	0.02 mm 450 g
Axial play	0.08 mm 450 g
Max. radial force	28N 20 mm from shaft
Max. axial force	7N
Dielectric strength	600VAC 1 sec.
Insulation resistance	100MΩ 500VDC
Ambient temperature	-20° - (+50°)
Insulation class	Class B
IP rating	IP30
Connection harness	UL 1061 AWG26 300 mm
Connector	Not in standard

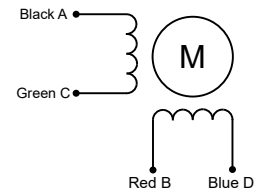
CUSTOMIZATION EXAMPLES

- Shaft configurations
- Bearing type and preload
- Temperature range
- IP rating
- Winding and performance optimization
- Cabling and harness
- Gear box to motor combinations
- Encoder to motor combinations

OPTIONS

- Stepper motor drivers Transmotec DS series
- Power supplies Transmotec LRS series

EXCITATION SEQUENCE TABLE



CW	A	C	B	D
1	●		●	
2		●	●	
3		●		●
4	●			●
1	●		●	

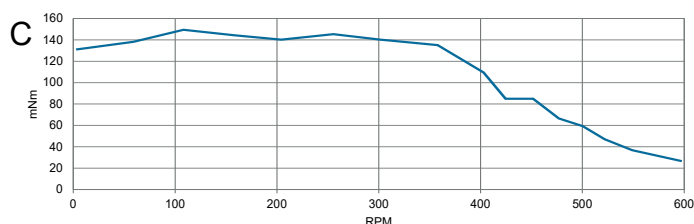
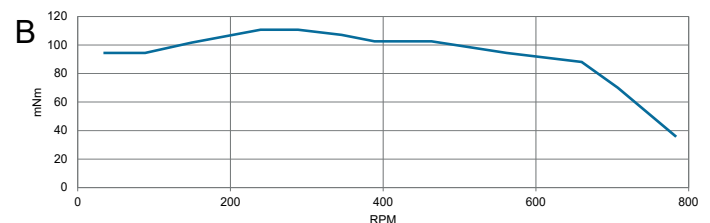
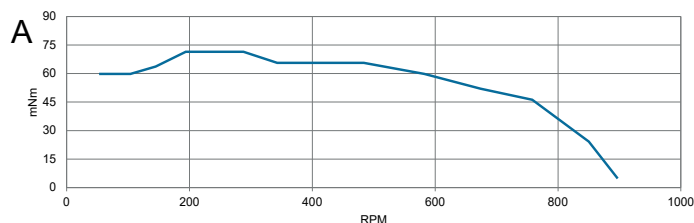
● = + Polarity

MOTOR DATA

Graph	A	B	C
Motor model	SHW2832-18-067	SHW2845-18-067	SHW2851-18-067
Holding torque mNm	60	95	120
Detent torque mNm	5.0	6.0	8.0
Rotor inertia gcm ²	4	12	18
Current phase A	0.67	0.67	0.67
Resistance phase Ω	5.60	6.80	9.20
Inductance mH	3.4	4.9	7.2
Length mm	32.0	45.0	51.0
Weight Kg	0.110	0.140	0.200

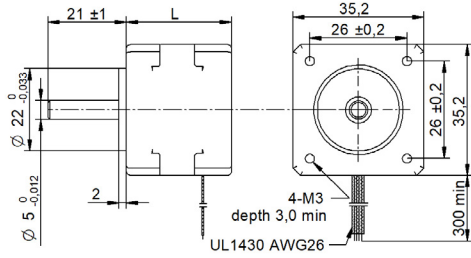
SPEED | TORQUE PERFORMANCE GRAPH PULL OUT

Graph	A	B	C
Supply voltage VDC	24	24	24
Current phase A	0.67	0.67	0.67



SHW35-18 Series cable □ 35 mm

DRAWING (mm)



PHOTO



MODEL NAME DESIGNATION

SHW3520 - STEP ANGLE - CURRENT



Example: SHW35-09-100

OPTIONS MOTOR DRIVERS AND POWER SUPPLIES



MOTOR FEATURES

Step angle	1.8
Step angle accuracy	± 5% full step no load
Shaft material	X8CrNiS18-9 SUS303
Bearing type	Ball bearing
Radial play	0.02 mm 450 g
Axial play	0.08 mm 450 g
Max. radial force	28N 20 mm from shaft
Max. axial force	10N
Dielectric strength	600VAC 1 sec.
Insulation resistance	100MΩ 500VDC
Ambient temperature	-20° - (+50°)
Insulation class	Class B
IP rating	IP30
Connection harness	UL 1430 AWG26 300 mm
Connector	Not in standard

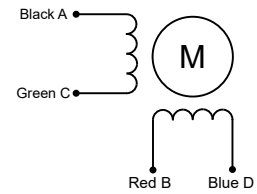
CUSTOMIZATION EXAMPLES

- Shaft configurations
- Bearing type and preload
- Temperature range
- IP rating
- Winding and performance optimization
- Cabling and harness
- Gear box to motor combinations
- Encoder to motor combinations

OPTIONS

- Stepper motor drivers Transmotec DS series
- Power supplies Transmotec LRS series

EXCITATION SEQUENCE TABLE



CW	A	C	B	D
1	●		●	
2		●	●	
3		●		●
4	●			●
1	●		●	

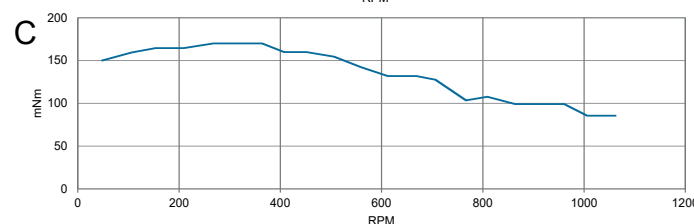
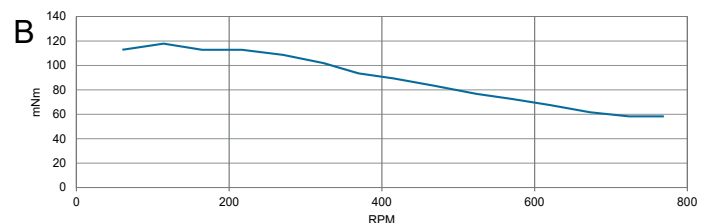
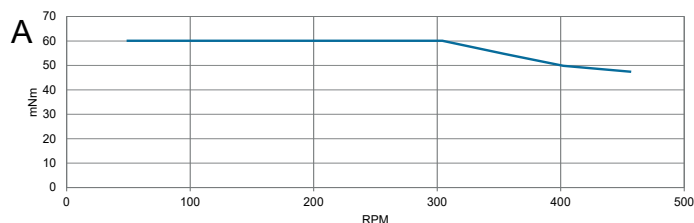
● = + Polarity

MOTOR DATA

Graph	A	B	C
Motor model	SHW3526-18-028	SHW3528-18-050	SHW3536-18-100
Holding torque mNm	70	100	140
Detent torque mNm	6.0	8.0	10.0
Rotor inertia gcm ²	10	11	14
Current phase A	0.28	0.50	1.00
Resistance phase Ω	26.00	20.00	2.70
Inductance mH	27	14	4.3
Length mm	26.0	28.0	36.0
Weight Kg	0.130	0.140	0.180

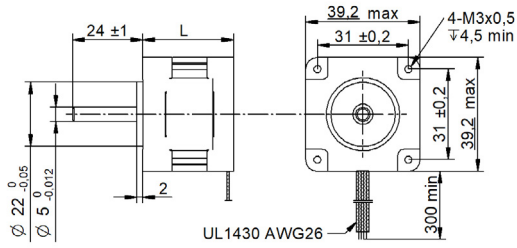
SPEED | TORQUE PERFORMANCE GRAPH PULL OUT

Graph	A	B	C
Supply voltage VDC	24	24	24
Current phase A	0.35	0.5	1.0



SHW39-18 Series cable □ 39 mm

DRAWING (mm)



PHOTO



MODEL NAME DESIGNATION

SHW3520 - STEP ANGLE - CURRENT

Example: SHW35-09-100



OPTIONS MOTOR DRIVERS AND POWER SUPPLIES



MOTOR FEATURES

Step angle	1.8
Step angle accuracy	± 5% full step no load
Shaft material	X8CrNiS18-9 SUS303
Bearing type	Ball bearing
Radial play	0.02 mm 450 g
Axial play	0.08 mm 450 g
Max. radial force	28N 20 mm from shaft
Max. axial force	10N
Dielectric strength	600VAC 1 sec.
Insulation resistance	100MΩ 500VDC
Ambient temperature	-20° - (+50°)
Insulation class	Class B
IP rating	IP30
Connection harness	UL 1430 AWG26 300 mm
Connector	Not in standard

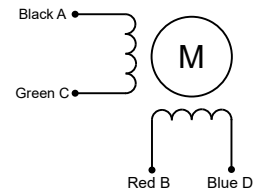
CUSTOMIZATION EXAMPLES

- Shaft configurations
- Bearing type and preload
- Temperature range
- IP rating
- Winding and performance optimization
- Cabling and harness
- Gear box to motor combinations
- Encoder to motor combinations

OPTIONS

- Stepper motor drivers Transmotec DS series
- Power supplies Transmotec LRS series

EXCITATION SEQUENCE TABLE



CW	A	C	B	D
1	●		●	
2		●	●	
3		●		●
4	●			●
1	●		●	

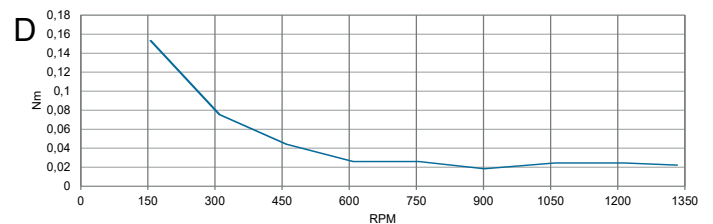
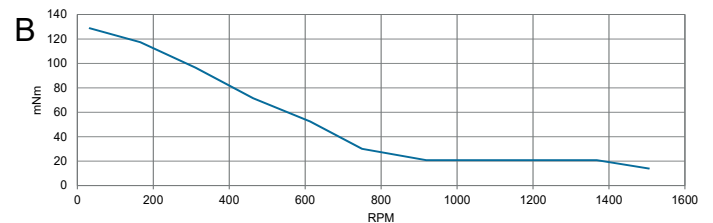
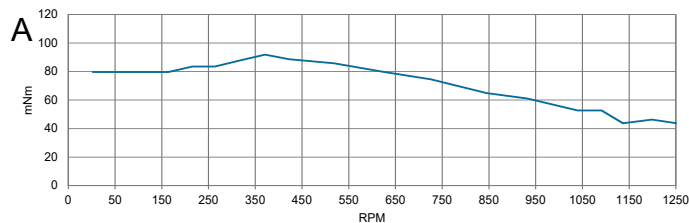
● = + Polarity

MOTOR DATA

Graph	A	B	C	D
Motor model	SHW3920-18-040	SHW3931-18-030	SHW3934-18-040	SHW3938-18-050
Holding torque mNm	85	180	210	360
Detent torque mNm	8.0	10.0	12.0	12.0
Rotor inertia gcm ²	0.12	0.18	20	0.2
Current phase A	0.40	0.30	0.40	0.50
Resistance phase Ω	6.60	40.00	30.00	24.00
Inductance mH	7	30	43	50
Length mm	20.0	31.0	34.0	38.0
Weight Kg	0.050	0.120	0.180	0.180

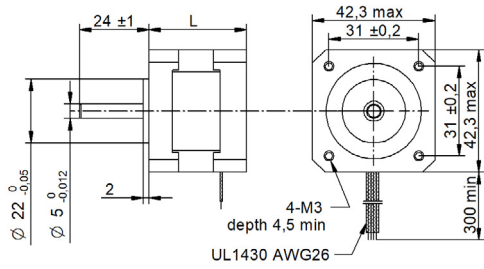
SPEED | TORQUE PERFORMANCE GRAPH PULL OUT

Graph	A	B	D
Supply voltage VDC	24	24	24
Current phase A	0.42	0.42	0.45



SHW42-18 Series cable □ 42 mm

DRAWING
(mm)



PHOTO



MODEL NAME DESIGNATION

SHW3520 - STEP ANGLE - CURRENT



Example: SHW35-09-100

OPTIONS MOTOR DRIVERS AND POWER SUPPLIES



MOTOR FEATURES

Step angle	1.8
Step angle accuracy	± 5% full step no load
Shaft material	X8CrNiS18-9 SUS303
Bearing type	Ball bearing
Radial play	0.02 mm 450 g
Axial play	0.08 mm 450 g
Max. radial force	28N 20 mm from shaft
Max. axial force	10N
Dielectric strength	600VAC 1 sec.
Insulation resistance	100MΩ 500VDC
Ambient temperature	-20° - (+50°)
Insulation class	Class B
IP rating	IP30
Connection harness	UL 1430 AWG26 300 mm
Connector	Not in standard

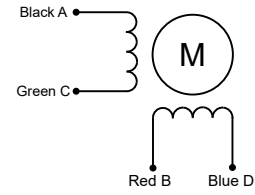
CUSTOMIZATION EXAMPLES

- Shaft configurations
- Bearing type and preload
- Temperature range
- IP rating
- Winding and performance optimization
- Cabling and harness
- Gear box to motor combinations
- Encoder to motor combinations

OPTIONS

- Stepper motor drivers Transmotec DS series
- Power supplies Transmotec LRS series

EXCITATION SEQUENCE TABLE



CW	A	C	B	D
1	●		●	
2		●	●	
3		●		●
4	●			●
1	●		●	

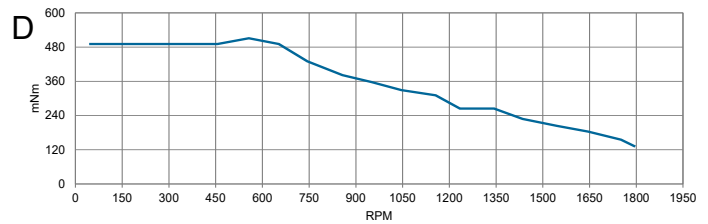
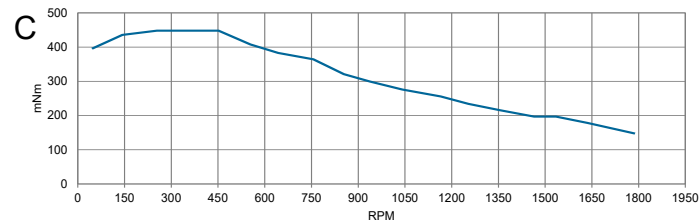
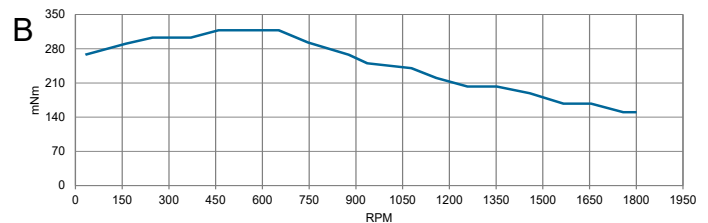
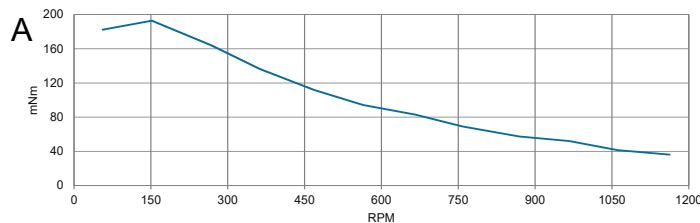
● = + Polarity

MOTOR DATA

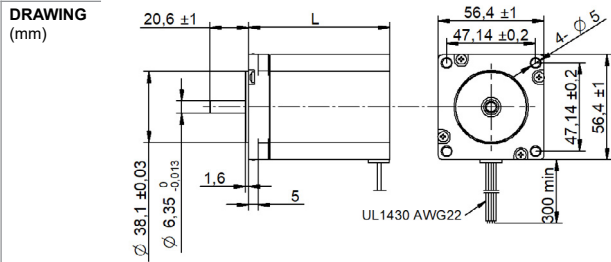
Graph	A	B	C	D
Motor model	SHW4226-18-040	SHW4234-18-133	SHW4240-18-168	SHW4248-18-168
Holding torque mNm	170	220	360	440
Detent torque mNm	7.5	12.0	15.0	20.0
Rotor inertia gcm ²	20	35	54	68
Current phase A	0.40	1.33	1.68	1.68
Resistance phase Ω	24.00	2.10	1.65	1.65
Inductance mH	30	2.5	3.2	2.8
Length mm	26.0	33.5	39.5	47.5
Weight Kg	0.150	0.220	0.280	0.350

SPEED | TORQUE PERFORMANCE GRAPH PULL OUT

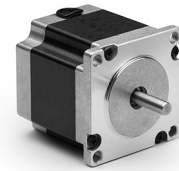
Graph	A	B	C	D
Supply voltage VDC	36	36	36	36
Current phase A	0.42	1.36	1.69	1.69



SHW57-18 Series cable □ 57 mm



PHOTO



MODEL NAME DESIGNATION

SHW3520 - STEP ANGLE - CURRENT

Example: SHW35-09-100



OPTIONS MOTOR DRIVERS AND POWER SUPPLIES



MOTOR FEATURES

Step angle	1.8
Step angle accuracy	± 5% full step no load
Shaft material	X8CrNiS18-9 SUS303
Bearing type	Ball bearing
Radial play	0.02 mm 450 g
Axial play	0.08 mm 450 g
Max. radial force	75N 20 mm from shaft
Max. axial force	15N
Dielectric strength	600VAC 1 sec.
Insulation resistance	100MΩ 500VDC
Ambient temperature	-20° - (+50°)
Insulation class	Class B
IP rating	IP30
Connection harness	UL 1430 AWG22 300 mm
Connector	Not in standard

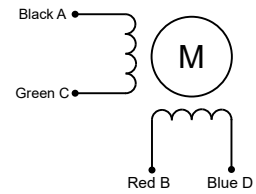
CUSTOMIZATION EXAMPLES

- Shaft configurations
- Bearing type and preload
- Temperature range
- IP rating
- Winding and performance optimization
- Cabling and harness
- Gear box to motor combinations
- Encoder to motor combinations

OPTIONS

- Stepper motor drivers Transmotec DS series
- Power supplies Transmotec LRS series

EXCITATION SEQUENCE TABLE



CW	A	C	B	D
1	●		●	
2		●	●	
3		●		●
4	●			●
1	●		●	

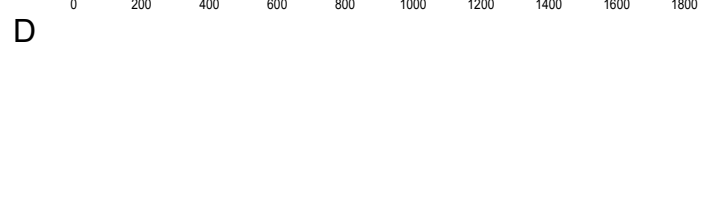
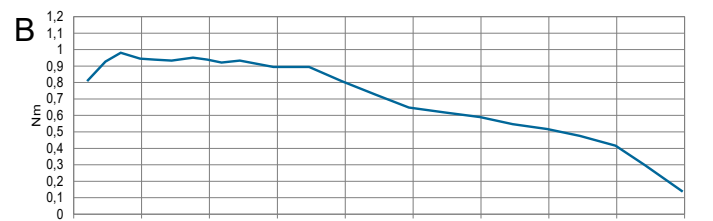
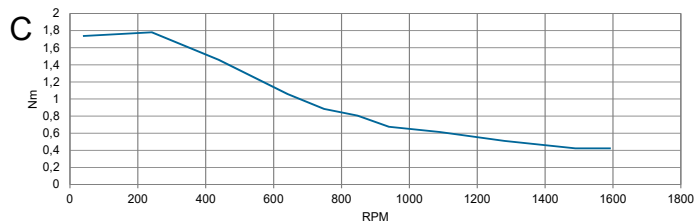
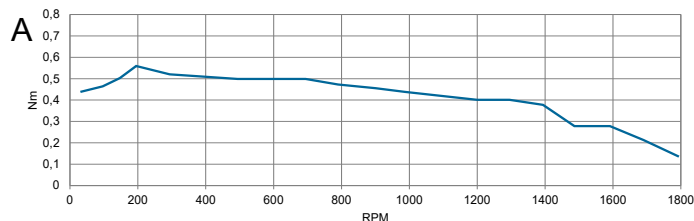
● = + Polarity

MOTOR DATA

Graph	A	B	C	D
Motor model	SHW5740-18-280	SHW5750-18-280	SHW5775-18-280	SHW57115-18-280
Holding torque Nm	0.55	1.00	1.89	3.00
Detent torque Nm	0.020	0.035	0.068	0.100
Rotor inertia gcm ²	120	275	480	650
Current phase A	2.80	2.80	2.80	2.80
Resistance phase Ω	0.70	0.83	1.13	2.10
Inductance mH	1.4	2.2	3.6	10
Length mm	40.0	50.0	75.0	115.0
Weight Kg	0.450	0.650	1.000	1.800

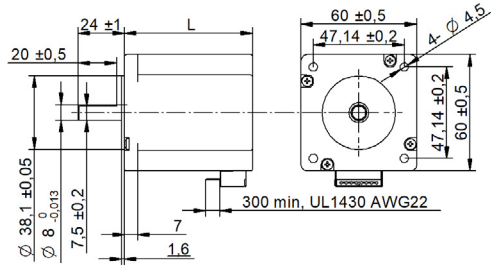
SPEED | TORQUE PERFORMANCE GRAPH PULL OUT

Graph	A	B	C
Supply voltage VDC	48	48	48
Current phase A	2.8	2.8	2.8

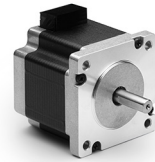


SHW60-18 Series cable □ 60 mm

DRAWING (mm)



PHOTO



MODEL NAME DESIGNATION

SHW3520 - STEP ANGLE - CURRENT

Example: SHW35-09-100



OPTIONS MOTOR DRIVERS AND POWER SUPPLIES



MOTOR FEATURES

Step angle	1.8
Step angle accuracy	± 5% full step no load
Shaft material	X8CrNiS18-9 SUS303
Bearing type	Ball bearing
Radial play	0.02 mm 450 g
Axial play	0.08 mm 450 g
Max. radial force	75N 20 mm from shaft
Max. axial force	15N
Dielectric strength	600VAC 1 sec.
Insulation resistance	100MΩ 500VDC
Ambient temperature	-20° - (+50°)
Insulation class	Class B
IP rating	IP30
Connection harness	UL 1430 AWG22 300 mm
Connector	Not in standard

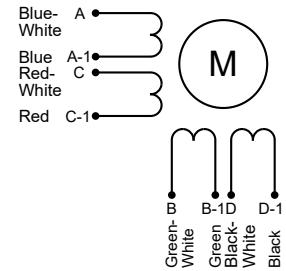
CUSTOMIZATION EXAMPLES

Shaft configurations
Bearing type and preload
Temperature range
IP rating
Winding and performance optimization
Cabling and harness
Gear box to motor combinations
Encoder to motor combinations

OPTIONS

Stepper motor drivers Transmotec DS series
Power supplies Transmotec LRS series

EXCITATION SEQUENCE TABLE



CW	A	C	B	D
1	●		●	
2		●	●	
3		●		●
4	●			●
1	●		●	

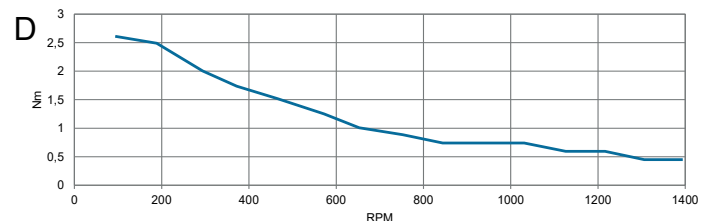
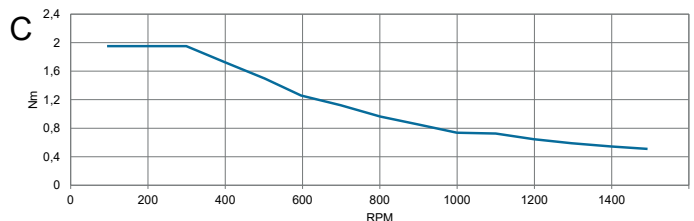
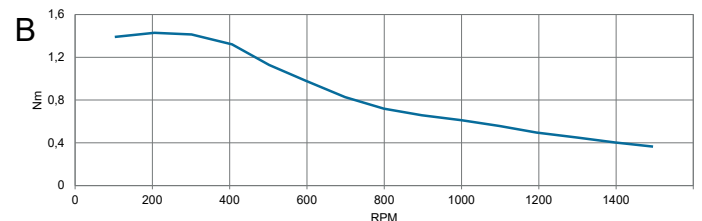
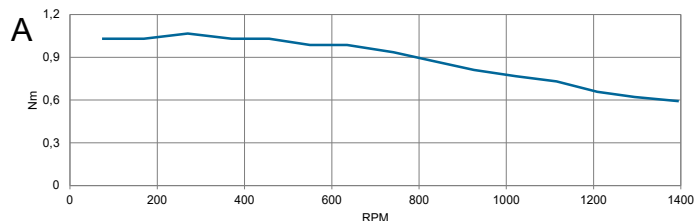
● = + Polarity

MOTOR DATA

Graph	A	B	C	D
Motor model	SHW6047-18-280	SHW6056-18-280	SHW6067-18-280	SHW6088-18-280
Holding torque Nm	1.10	1.65	2.10	3.00
Detent torque Nm	0.05	0.07	0.09	0.12
Rotor inertia gcm ²	275	400	570	840
Current phase A	2.80	2.80	2.80	2.80
Resistance phase Ω	0.75	0.90	1.20	1.50
Inductance mH	2	3.6	4.6	6.8
Length mm	47.0	56.0	67.0	88.0
Weight Kg	0.600	0.770	1.200	1.400

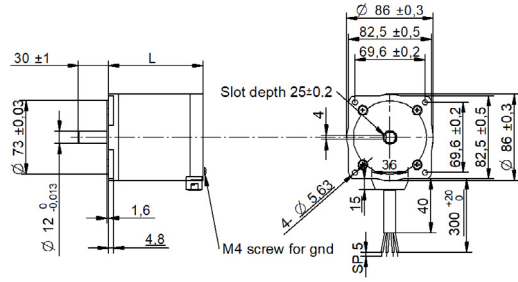
SPEED | TORQUE PERFORMANCE GRAPH PULL OUT

Graph	A	B	C	D
Supply voltage VDC	48	48	48	48
Current phase A	2.7	2.7	2.7	2.7
Phase connection	Parallel connection			



SHW86-18 Series cable □ 86 mm

DRAWING (mm)



MODEL NAME DESIGNATION

SHW3520 - STEP ANGLE - CURRENT

Example: SHW35-09-100



PHOTO



OPTIONS MOTOR DRIVERS AND POWER SUPPLIES



MOTOR FEATURES

Step angle	1.8
Step angle accuracy	± 5% full step no load
Shaft material	X8CrNiS18-9 SUS303
Bearing type	Ball bearing
Radial play	0.02 mm 450 g
Axial play	0.08 mm 450 g
Max. radial force	220N 20 mm from shaft
Max. axial force	60N
Dielectric strength	600VAC 1 sec.
Insulation resistance	100MΩ 500VDC
Ambient temperature	-20° - (+50°)
Insulation class	Class B
IP rating	IP30
Connection harness	
Connector	Not in standard

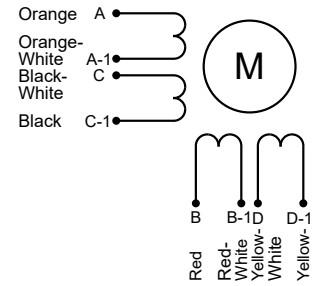
CUSTOMIZATION EXAMPLES

- Shaft configurations
- Bearing type and preload
- Temperature range
- IP rating
- Winding and performance optimization
- Cabling and harness
- Gear box to motor combinations
- Encoder to motor combinations

OPTIONS

- Stepper motor drivers Transmotec DS series
- Power supplies Transmotec LRS series

EXCITATION SEQUENCE TABLE



CW	A	C	B	D
1	●		●	
2		●	●	
3		●		●
4	●			●
1	●		●	

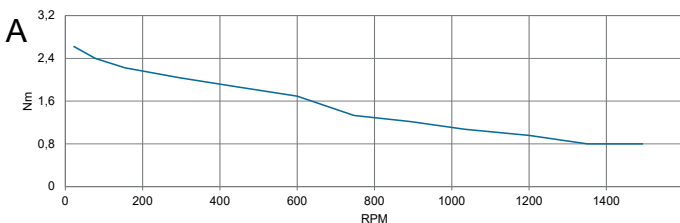
● = + Polarity

MOTOR DATA

Graph	A			
Motor model	SHW8694-18-280			
Holding torque Nm	4.8			
Detent torque Nm	0.18			
Rotor inertia gcm ²	1200			
Current phase A	2.8			
Resistance phase Ω	1.7			
Inductance mH	7.7			
Length mm	94.0			
Weight Kg	2.4			

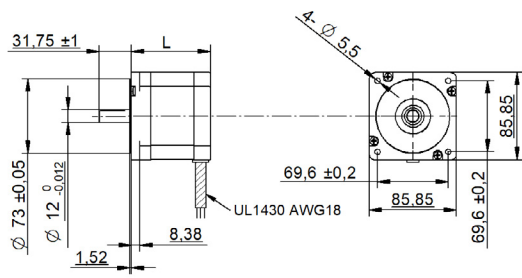
SPEED | TORQUE PERFORMANCE GRAPH PULL OUT

Graph	A			
Supply voltage V	100			
Current phase A	3.96			
Phase connection	Parallel connection			

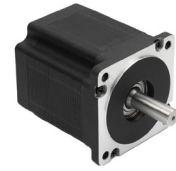


SHW86-18 Series cable □ 86 mm

DRAWING (mm)



PHOTO



MODEL NAME DESIGNATION

SHW3520 - STEP ANGLE - CURRENT

Example: SHW35-09-100



OPTIONS MOTOR DRIVERS AND POWER SUPPLIES



MOTOR FEATURES

Step angle	1.8
Step angle accuracy	± 5% full step no load
Shaft material	X8CrNiS18-9 SUS303
Bearing type	Ball bearing
Radial play	0.02 mm 450 g
Axial play	0.08 mm 450 g
Max. radial force	220N 20 mm from shaft
Max. axial force	60N
Dielectric strength	600VAC 1 sec.
Insulation resistance	100MΩ 500VDC
Ambient temperature	-20° - (+50°)
Insulation class	Class B
IP rating	IP30
Connection harness	UL 1430 AWG18 300 mm
Connector	Not in standard

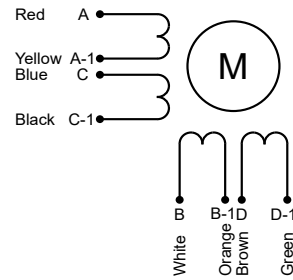
CUSTOMIZATION EXAMPLES

- Shaft configurations
- Bearing type and preload
- Temperature range
- IP rating
- Winding and performance optimization
- Cabling and harness
- Gear box to motor combinations
- Encoder to motor combinations

OPTIONS

- Stepper motor drivers Transmotec DS series
- Power supplies Transmotec LRS series

EXCITATION SEQUENCE TABLE



CW	A	C	B	D
1	●		●	
2		●	●	
3		●		●
4	●			●
1	●		●	

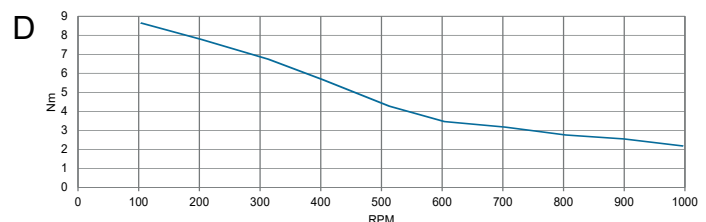
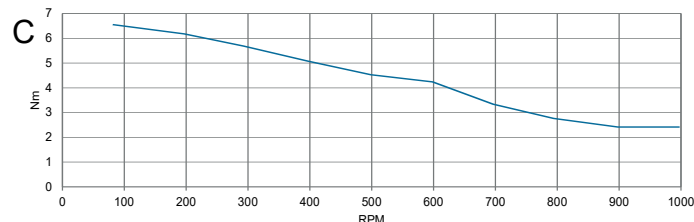
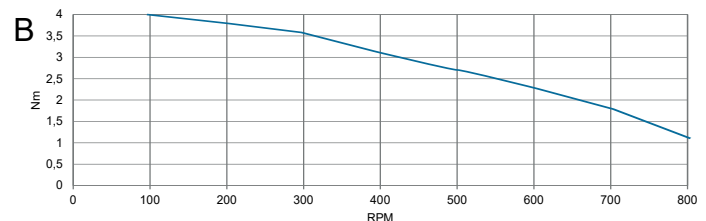
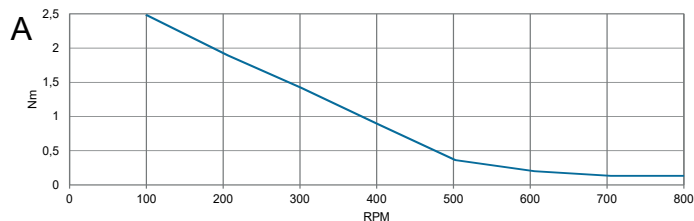
● = + Polarity

MOTOR DATA

Graph	A	B	C	D
Motor model	SHW8665-18-400	SHW8680-18-600	SHW86118-18-600	SHW86156-18-600
Holding torque Nm	3.50	4.50	8.50	12.00
Detent torque Nm	0.08	0.12	0.24	0.36
Rotor inertia gcm ²	1000	1400	2700	4000
Current phase A	4.00	6.00	6.00	0.63
Resistance phase Ω	0.65	0.33	0.50	8.00
Inductance mH	3.9	3	6	12
Length mm	65.0	80.0	118.0	156.0
Weight Kg	1.700	2.300	3.800	5.300

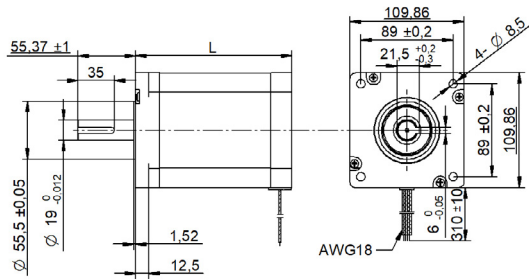
SPEED | TORQUE PERFORMANCE GRAPH PULL OUT

Graph	A	B	C	D
Supply voltage V	48	48	48	48
Current phase A	5.6	5.6	5.6	5.6
Phase connection	Parallel connection			

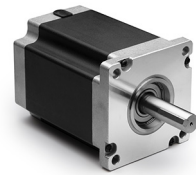


SHW110-18 Series cable □ 110 mm

DRAWING (mm)



PHOTO



MODEL NAME DESIGNATION

SHW3520 - STEP ANGLE - CURRENT

Example: SHW35-09-100



OPTIONS MOTOR DRIVERS AND POWER SUPPLIES



MOTOR FEATURES

Step angle	1.8
Step angle accuracy	± 5% full step no load
Shaft material	X8CrNiS18-9 SUS303
Bearing type	Ball bearing
Radial play	0.02 mm 450 g
Axial play	0.08 mm 450 g
Max. radial force	330N 20 mm from shaft
Max. axial force	100N
Dielectric strength	600VAC 1 sec.
Insulation resistance	100MΩ 500VDC
Ambient temperature	-20° - (+50°)
Insulation class	Class B
IP rating	IP30
Connection harness	AWG18 310 mm
Connector	Not in standard

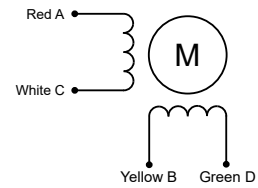
CUSTOMIZATION EXAMPLES

- Shaft configurations
- Bearing type and preload
- Temperature range
- IP rating
- Winding and performance optimization
- Cabling and harness
- Gear box to motor combinations
- Encoder to motor combinations

OPTIONS

- Stepper motor drivers Transmotec DS series
- Power supplies Transmotec LRS series

EXCITATION SEQUENCE TABLE



CW	A	C	B	D
1	●		●	
2		●	●	
3		●		●
4	●			●
1	●		●	

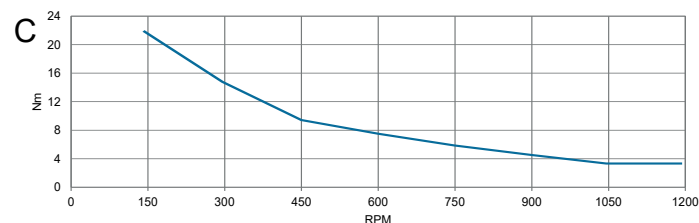
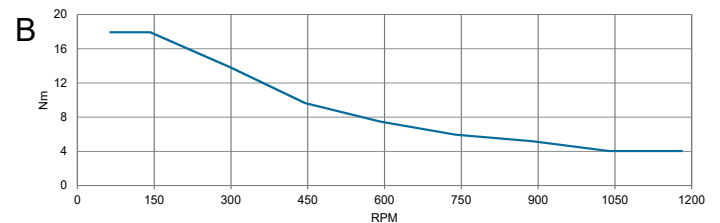
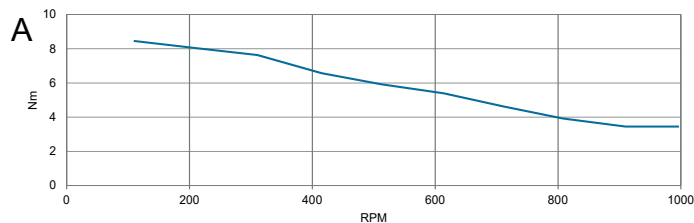
● = + Polarity

MOTOR DATA

Graph	A	B	C
Motor model	SHW11099-18-550	SHW110150-18-650	SHW110201-18-800
Holding torque Nm	11.20	21.00	28.00
Detent torque Nm	0.55	1.09	1.62
Rotor inertia gcm ²	3000	5900	7500
Current phase A	5.50	6.50	8.00
Resistance phase Ω	0.70	0.72	0.67
Inductance mH	9.8	11.5	12
Length mm	99.0	150.0	201.0
Weight Kg	5.000	8.400	11.700

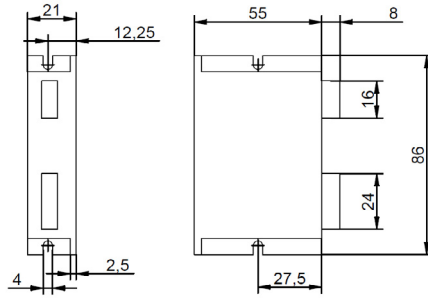
SPEED | TORQUE PERFORMANCE GRAPH PULL OUT

Graph	A	B	C
Supply voltage VDC			
Current phase A			

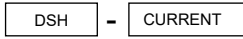


DSH-200

DRAWING (mm)

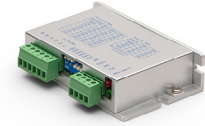


MODEL NO. DESIGNATION



Example: DSH-200

PHOTO



OPTIONS POWER SUPPLIES LRS SERIES



GENERAL

Model	Current	Weight	IP	Temperature range	Accessories
DSH-200	2.2 A	0.10 Kg	IP20	0 - 50 °C	Power supplies series Transmotec LRS series

FUNCTIONS

ALARM PWR	LED indicators	Green LED on Red LED on	Power on Fault detection
+5V	Control signal positive power		
DIR	Motor direction signal	+5 V CW rotational direction	0 V CCW rotational direction
PUL	Pulse signal	Driver input clock pulses (LO=0V, HI=5V)	Max pulse frequency 200 kHz
MF	Motor enable signal	+5 V to enable rotation	0 V to disable rotation
A- A+ B- B+		Motor phases connection	-
V+ V-		Power supply 18-36 VDC GND	

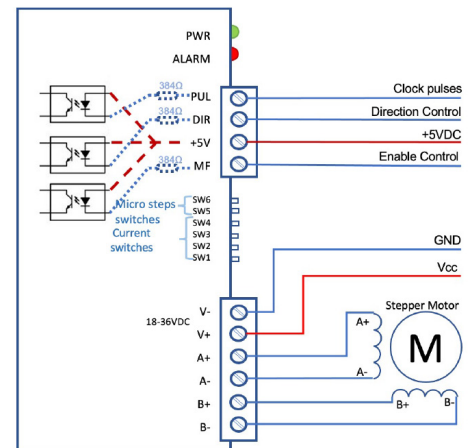
Note +5V = signal voltage | +5VDC= continuous supply voltage

CURRENT LIMIT SWITCH SETTINGS

Current RMS A	0.2	0.4	0.5	0.7	0.9	1.1	1.4	1.6
Current peak A	0.3	0.5	0.7	1.0	1.3	1.6	1.9	2.2
SW1	ON	OFF	ON	OFF	ON	OFF	ON	OFF
SW2	ON	ON	OFF	OFF	ON	ON	OFF	OFF
SW3	ON	ON	ON	ON	OFF	OFF	OFF	OFF

MICRO-STEP SWITCH SETTINGS

Micro-step/step	1	8	16	32
PUL/REV	200	1600	3200	6400
SW5	ON	OFF	ON	OFF
SW6	ON	ON	OFF	OFF

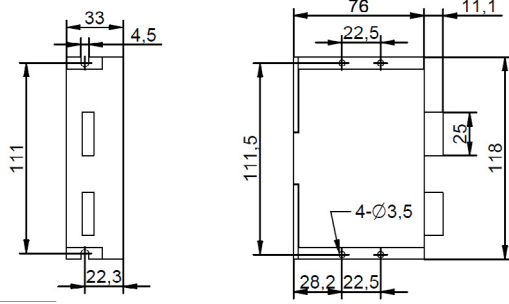


FUNCTION SWITCH SETTINGS

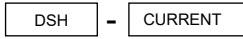
		ON-SETTING	OFF-SETTING
SW4	Full and half current	Full current always	Half current when pulse time ≥ 200 ms

DSH-300

DRAWING (mm)



MODEL NO. DESIGNATION



Example: DSH-300

PHOTO



OPTIONS POWER SUPPLIES LRS SERIES



GENERAL

Model	Current	Weight	IP	Temperature range	Accessories
DSH-300	3 A	0.25 Kg	IP20	0 - 50 °C	Power supplies series Transmotec LRS series

FUNCTIONS

ALARM PWR	LED indicators	Green LED on Green LED flashes	Power on Fault detection
DIR-	Motor direction signal	+5 V CW rotational direction	0 V CCW rotational direction
DIR+	Motor direction Vcc	+5 VDC to enable direction control	-
PUL-	Pulse signal	Driver input clock pulses (LO=0V, HI=5V)	Max pulse frequency 200 kHz
PUL+	Pulse Vcc	+5 VDC to enable clock pulses	-
MF-	Motor enable signal	+5 V to enable rotation	0 V to disable rotation
MF+	Motor enable Vcc	+5 VDC to enable the enable operation	-
A- A+ B- B+		Motor phases connection	-
V+ V-		Power supply 20-50 VDC GND	

Note +5V = signal voltage | +5VDC= continuous supply voltage

CURRENT LIMIT SWITCH SETTINGS

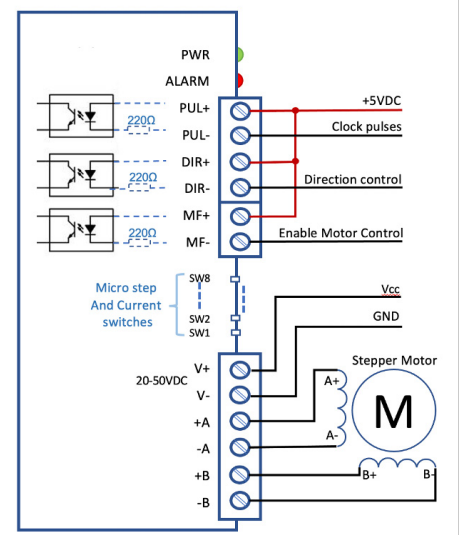
Current RMS A	0.7	1.0	1.4	1.7	2.0	2.4	2.7	3.0
Current peak A	1.0	1.5	1.9	2.4	2.8	3.3	3.8	4.2
SW1	ON	OFF	ON	OFF	ON	OFF	ON	OFF
SW2	ON	ON	OFF	OFF	ON	ON	OFF	OFF
SW3	ON	ON	ON	ON	OFF	OFF	OFF	OFF

MICRO-STEP SWITCH SETTINGS

Micro-step/step	2	4	8	16	32	64	128	5	10	20	25	40	50	100	200
PUL/REV	400	800	1.6K	3.2K	6.4K	12.8K	25.6K	1K	2K	4K	5K	8K	10K	20K	40K
SW5	OFF	ON	OFF	ON	OFF	ON	OFF	ON	OFF	ON	OFF	ON	OFF	ON	OFF
SW6	ON	OFF	OFF	ON	ON	OFF	OFF	ON	ON	OFF	OFF	ON	ON	OFF	OFF
SW7	ON	ON	ON	OFF	OFF	OFF	OFF	ON	ON	ON	ON	OFF	OFF	OFF	OFF
SW8	ON	ON	ON	ON	ON	ON	ON	OFF	OFF	OFF	OFF	OFF	OFF	OFF	OFF

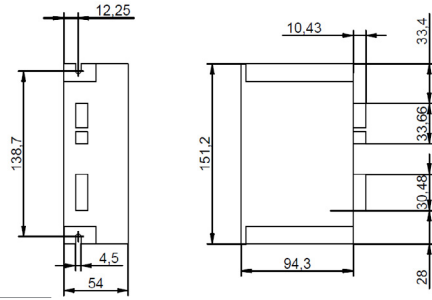
FUNCTION SWITCH SETTINGS

	ON-SETTING	OFF-SETTING
SW4	Full and half current	Half current when pulse time ≥ 200 ms



DSH-600

DRAWING (mm)



MODEL NO. DESIGNATION

DSH - CURRENT

Example: DSH-600

PHOTO



OPTIONS POWER SUPPLIES LRS SERIES



GENERAL

Model	Current	Weight	IP	Temperature range	Accessories
DSH-600	6 A	0.60 Kg	IP20	0 - 50 °C	Power supplies series Transmotec LRS series

FUNCTIONS

ALARM PWR	LED indicators	Green LED on Green LED flashes Red LED 2 flashes / 3 seconds Red LED 3 flashes / 3 seconds Red LED 4 flashes / 3 seconds	Motor disabled Motor enabled Undervoltage Overvoltage Overcurrent
DIR-	Motor direction signal	+5 V CW rotational direction	0 V CCW rotational direction
DIR+	Motor direction Vcc	+5 VDC to enable direction control	-
PUL-	Pulse signal	Driver input clock pulses	Max pulse frequency 200 kHz
PUL+	Pulse Vcc	+5 VDC to enable clock pulses	-
MF-	Motor enable signal	+5 V to enable rotation	0 V to disable rotation
MF+	Motor enable Vcc	+5 VDC to enable the enable operation	-
A- A+ B- B+		Motor phases connection	-
DC AC		Power supply 24-110 VDC polarity any 18-80 VAC	

Note +5V = signal voltage | +5VDC= continuous supply voltage

CURRENT LIMIT SWITCH SETTINGS

Current RMS A	2.00	2.57	3.14	3.71	4.28	4.86	5.43	6.00
Current peak A	2.40	3.08	3.77	4.45	5.14	5.83	6.52	7.20
SW1	ON	OFF	ON	OFF	ON	OFF	ON	OFF
SW2	ON	ON	OFF	OFF	ON	ON	OFF	OFF
SW3	ON	ON	ON	ON	OFF	OFF	OFF	OFF

MICRO-STEP SWITCH SETTINGS

Micro-step/step	2	4	8	16	32	64	128	256	5	10	20	25	40	50	100	200
PUL/REV	400	800	1.6K	3.2K	6.4K	12.8K	25.6K	51.2K	1K	2K	4K	5K	8K	10K	20K	40K
SW5	ON	OFF	ON	OFF	ON	OFF	ON	OFF	ON	OFF	ON	OFF	ON	OFF	ON	OFF
SW6	ON	ON	OFF	OFF	ON	ON	OFF	OFF	ON	ON	OFF	OFF	ON	ON	OFF	OFF
SW7	ON	ON	ON	ON	OFF	OFF	OFF	OFF	ON	ON	ON	ON	OFF	OFF	OFF	OFF
SW8	ON	ON	ON	ON	ON	ON	ON	ON	OFF	OFF	OFF	OFF	OFF	OFF	OFF	OFF

FUNCTION SWITCH SETTINGS

		ON-SETTING	OFF-SETTING
SW4	Full and half current	Full current always	Half current when pulse time ≥ 200 ms
SW9	Pulse Smoothing	Motor accelerate and decelerate smoothly	Regular acceleration and deceleration
SW10	N/A	N/A	N/A
SW11	Pulse filter	Enabled low pass filter ≤ 400 Hz	Enabled low pass filter ≤ 100 Hz
SW12	N/A	N/A	N/A
SW13	Pulse mode not supported	Always off	Always off
SW14	Self-test	Connect only driver and power to motor. Motor should run by internal puses at 5 kHz	Normal connection

