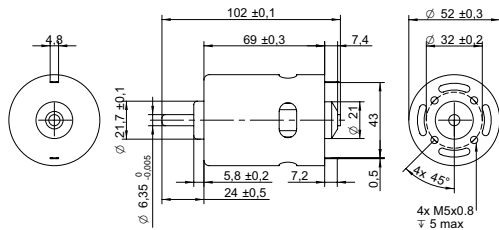


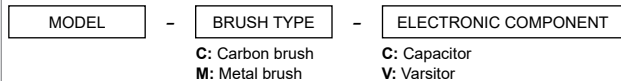
DRAWING (mm)



PHOTO



MODEL NO. DESIGNATION



Example: 987-5025F-C

OPTIONS POWER SUPPLIES

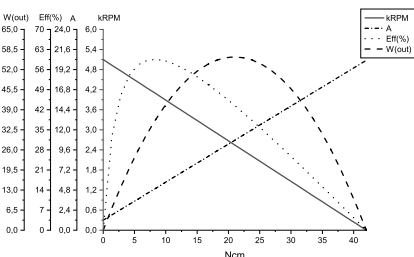


● C = customizations are offered on demand even for smaller quantities. Typical customizations are indicated with a green dot at column end. Please contact us for any customization request.

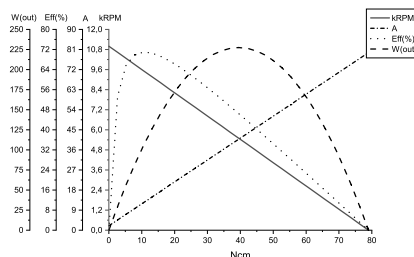
MOTOR DATA					C
Model number		987-5025F-C	987-8012F-C	987-8010F-C	987-5524F-C
Diameter	mm	52	52	52	52
Length	mm	69	69	69	69
Nominal voltage	V	12	12	12	24
No load current	A	1.2	2	2.3	0.95
Nominal current	A	4.8	13.1	11.9	6.3
Start/Stall current	A	20	80	83	45
No load speed	rpm	5100	11000	13000	11000
Nominal speed	rpm	4000	9000	11100	9700
Nominal torque	mNm	84	110	88	110
Start/Stall torque	mNm	420	790	680	860
Nominal power	W	35	110	100	110
Efficiency	%	63	68	72	74

COMMON MOTOR DATA					C
Shaft diameter	mm	6.35			●
Number of pole pairs		1			
Number of commutator segments		7			
Weight	g	660			
Service life	hrs	500 to 1000			
Operating temperature	°C	-10 to +60			●
Housing material		Galvanized steel			
Shaft material		High-carbon steel			●
Magnet material		Ferrite			
IP rating		IP40			
Motor insulation class		Level A			●

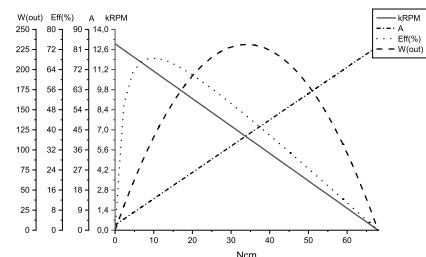
MOTOR DATA GRAPH - 987-5025F-C



MOTOR DATA GRAPH - 987-8012F-C



MOTOR DATA GRAPH - 987-8010F-C



MOTOR DATA GRAPH - 987-5524F-C

