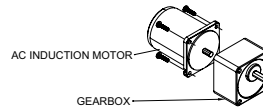
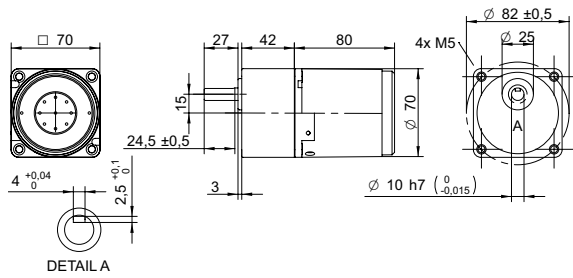


DRAWING (mm)

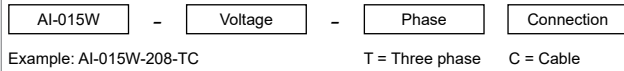


PHOTO

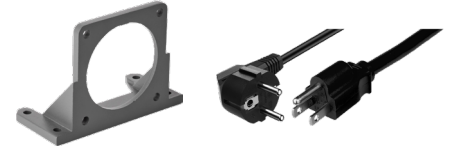


AC induction motor and gearbox also sold separately.

MODEL NO. DESIGNATION



ACCESSORIES<sup>1</sup>



C = customizations are offered on demand even for smaller quantities. Typical customizations are indicated with a green dot at column end. Please contact us for any customization request.

GEAR MOTOR DATA

	3	3.6	5	6	7.5	9	10	12.5	15	18	20	25	30	36	40	50	60	75	90	100	120	150	180	200	250	300	500	600	750	C	
Gear ratio	3	3.6	5	6	7.5	9	10	12.5	15	18	20	25	30	36	40	50	60	75	90	100	120	150	180	200	250	300	500	600	750		
Nominal torque	Nm	0.26	0.31	0.43	0.51	0.64	0.77	0.85	1.1	1.3	1.5	1.5	1.9	2.3	2.8	3.1	3.8	4.2	5.0 <sup>2</sup>	5.0 <sup>2</sup>	5.0 <sup>2</sup>	5.0 <sup>2</sup>	5.0 <sup>2</sup>	5.0 <sup>2</sup>	5.0 <sup>2</sup>	5.0 <sup>2</sup>	5.0 <sup>2</sup>	5.0 <sup>2</sup>	5.0 <sup>2</sup>		
Nominal speed	rpm	480	400	290	240	190	160	150	120	97	81	73	58	48	40	36	29	24	19	16	15	12	10	8	7	6	5	3	2	2	
Nominal power	W	13	13	13	13	13	13	13	13	13	13	12	12	12	12	12	11	10	8	8	6	5	4	4	3.0	2.5	1.5	1.3	1.0		
Gearb. nom. torq. <sup>3</sup>	Nm	5	5	5	5	5	5	5	5	5	5	5	5	5	5	5	5	5	5	5	5	5	5	5	5	5	5	5	5		
Gearbox efficiency	%	81	81	81	81	81	81	81	81	81	73	73	73	73	73	73	66	66	66	66	66	66	66	66	59	59	59	59	59		
Radial load <sup>4</sup>	N	120	120	120	120	120	120	120	120	120	250	250	250	250	250	250	250	250	250	250	250	250	250	250	250	250	250	250	250		
Direction of rot.		CW	CW	CW	CW	CW	CW	CW	CW	CCW	CCW	CCW	CCW	CCW	CCW	CCW	CW	CW	CW	CW	CW	CW	CW	CW	CCW	CCW	CCW	CCW	CCW		
Weight	kg	1.6	1.6	1.6	1.6	1.6	1.6	1.6	1.6	1.6	1.6	1.6	1.6	1.6	1.6	1.6	1.6	1.6	1.6	1.6	1.6	1.6	1.6	1.6	1.6	1.6	1.6	1.6	1.6		

OTHER GEAR MOTOR DATA

Service life	h	10000	C
Performance tolerances		± 15	
Operating temperature	°C	-10 to 40	
IP rating		IP20	
Manufacturing standard		ISO 9001	
CE label   UL label		No   No	

AC INDUCTION MOTOR DATA

Nominal voltage	V	220	C
No. of phases		3	
Frequency	Hz	60	
No. of poles		4	
Nominal speed	rpm	1500	
Nominal torque	mNm	110	
Nominal current	A	0.12	
Nominal power	W	15	
Stall torque	mNm	180	
Insulation class		B	
Motor cable		AWG20	
Motor cable length	mm	300	
Capacitor included in delivery	µF	-	
Insulation resistance	MΩ	100	
Dielectric strength	kV	1.5	
Max. winding temperature	°C	80	
Weight	kg	1	

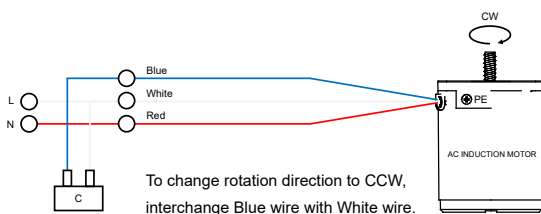
GEAR MOTOR RANGE AI-SERIES<sup>5</sup>

Nominal voltage	V	See separate datasheet
Nominal power	W	See separate datasheet
Dimension	mm	See separate datasheet

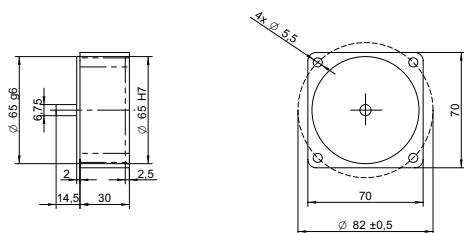
NOTES

1. See page 2 of this datasheet.
2. Gear motor torque limited by gearbox.
3. Gearbox nominal torque.
4. 20 mm from shaft.
5. Visit [www.transmotec.com](http://www.transmotec.com) to view datasheets.

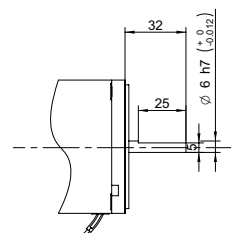
WIRING DIAGRAM AC INDUCTION MOTOR



## DECIMAL GEARBOX<sup>1</sup>



## OUTPUT SHAFT D-CUT



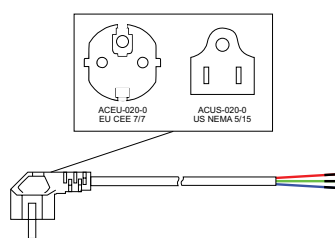
## DECIMAL GEARBOX DATA

Model designation	S70A-Y010	
Gear ratio	10:1	
Nominal torque	Nm	5
Description	Connected between AC motor and existing gearbox to decrease the speed further than the gear ratio listed in the table.	

## DECIMAL GEARBOX DATA

Model designation	Contact us for more information.
-------------------	----------------------------------

## POWER CABLE



## POWER CABLE DATA

Model designation	ACEU-020-0   ACUS-020-0	
Standard	EU CEE 7/7   US NEMA 5/15	
Cable length	m   ft	2   8

## NOTES

1. Visit [www.transmotec.com](http://www.transmotec.com) to view datasheets.