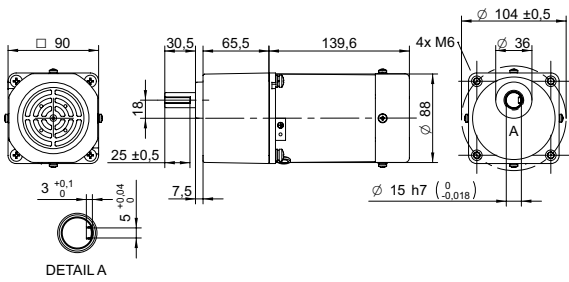
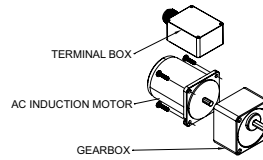


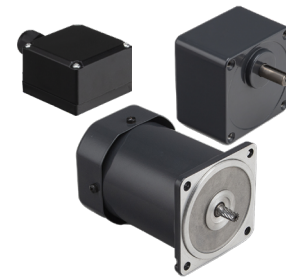
DRAWING (mm)



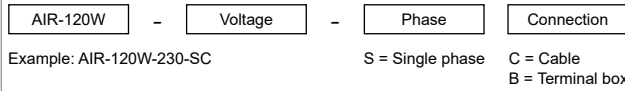
AC induction motor and gearbox also sold separately.



PHOTO



MODEL NO. DESIGNATION



ACCESSORIES<sup>1</sup>



C = customizations are offered on demand even for smaller quantities. Typical customizations are indicated with a green dot at column end. Please contact us for any customization request.

GEAR MOTOR DATA

|                                |     | 3   | 3.6 | 5   | 6   | 7.5 | 9   | 10  | 12.5 | 15  | 18  | 20  | 25  | 30              | 36              | 40              | 50              | 60              | 75              | 90              | 100             | 120             | 150             | 180             | 200             |     |
|--------------------------------|-----|-----|-----|-----|-----|-----|-----|-----|------|-----|-----|-----|-----|-----------------|-----------------|-----------------|-----------------|-----------------|-----------------|-----------------|-----------------|-----------------|-----------------|-----------------|-----------------|-----|
| Gear ratio                     |     | 3   | 3.6 | 5   | 6   | 7.5 | 9   | 10  | 12.5 | 15  | 18  | 20  | 25  | 30              | 36              | 40              | 50              | 60              | 75              | 90              | 100             | 120             | 150             | 180             | 200             |     |
| Nominal torque                 | Nm  | 2.3 | 2.7 | 3.8 | 4.5 | 5.6 | 6.8 | 7.5 | 9.4  | 11  | 14  | 14  | 17  | 20 <sup>2</sup> | 20 <sup>2</sup> | 20 <sup>2</sup> | 20 <sup>2</sup> | 20 <sup>2</sup> | 20 <sup>2</sup> | 20 <sup>2</sup> | 20 <sup>2</sup> | 20 <sup>2</sup> | 20 <sup>2</sup> | 20 <sup>2</sup> | 20 <sup>2</sup> | ●   |
| Nominal speed                  | rpm | 420 | 350 | 250 | 210 | 170 | 140 | 130 | 100  | 83  | 69  | 63  | 50  | 42              | 35              | 31              | 25              | 21              | 17              | 14              | 13              | 10              | 8               | 7               | 6               |     |
| Nominal power                  | W   | 99  | 99  | 99  | 99  | 99  | 99  | 99  | 99   | 99  | 99  | 89  | 89  | 87              | 73              | 65              | 52              | 44              | 35              | 29              | 26              | 22              | 17              | 15              | 13              |     |
| Gearb. nom. torq. <sup>3</sup> | Nm  | 20  | 20  | 20  | 20  | 20  | 20  | 20  | 20   | 20  | 20  | 20  | 20  | 20              | 20              | 20              | 20              | 20              | 20              | 20              | 20              | 20              | 20              | 20              | 20              | 20  |
| Gearbox efficiency             | %   | 81  | 81  | 81  | 81  | 81  | 81  | 81  | 81   | 81  | 81  | 73  | 73  | 73              | 73              | 73              | 73              | 66              | 66              | 66              | 66              | 66              | 66              | 66              | 66              | 66  |
| Radial load <sup>4</sup>       | N   | 500 | 500 | 500 | 500 | 500 | 500 | 600 | 600  | 600 | 600 | 700 | 700 | 700             | 700             | 700             | 700             | 700             | 700             | 700             | 700             | 700             | 700             | 700             | 700             | 700 |
| Direction of rot.              |     | CW  | CW  | CW  | CW  | CW  | CW  | CCW | CCW  | CCW | CCW | CW  | CW  | CW              | CW              | CW              | CW              | CW              | CW              | CCW             | CCW             | CCW             | CCW             | CCW             | CCW             | CCW |
| Weight                         | kg  | 4.8 | 4.8 | 4.8 | 4.8 | 4.8 | 4.8 | 4.8 | 4.8  | 4.8 | 4.8 | 4.8 | 4.8 | 4.8             | 4.8             | 4.8             | 4.8             | 4.8             | 4.8             | 4.8             | 4.8             | 4.8             | 4.8             | 4.8             | 4.8             | 4.8 |

OTHER GEAR MOTOR DATA

|                        |    |             |
|------------------------|----|-------------|
| Service life           | h  | 10000       |
| Performance tolerances |    | ± 15        |
| Operating temperature  | °C | -10 to 40   |
| IP rating <sup>5</sup> |    | IP20   IP54 |
| Manufacturing standard |    | ISO 9001    |
| CE label   UL label    |    | Yes   No    |

AC INDUCTION MOTOR DATA

|                                |     |       |
|--------------------------------|-----|-------|
| Nominal voltage                | V   | 230   |
| No. of phases                  |     | 1     |
| Frequency                      | Hz  | 50    |
| No. of poles                   |     | 4     |
| Nominal speed                  | rpm | 1300  |
| Nominal torque                 | mNm | 930   |
| Nominal current                | A   | 1.2   |
| Nominal power                  | W   | 120   |
| Stall torque                   | mNm | 720   |
| Insulation class               |     | B     |
| Motor cable                    |     | AWG18 |
| Motor cable length             | mm  | 300   |
| Capacitor included in delivery | µF  | 7     |
| Insulation resistance          | MΩ  | 100   |
| Dielectric strength            | kV  | 1.5   |
| Max. winding temperature       | °C  | 80    |
| Weight                         | kg  | 3.3   |

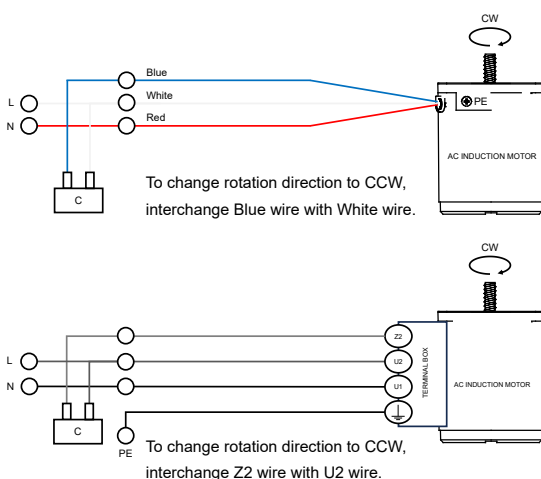
GEAR MOTOR RANGE AIR-SERIES<sup>7</sup>

|                 |    |                        |
|-----------------|----|------------------------|
| Nominal voltage | V  | See separate datasheet |
| Nominal power   | W  | See separate datasheet |
| Dimension       | mm | See separate datasheet |

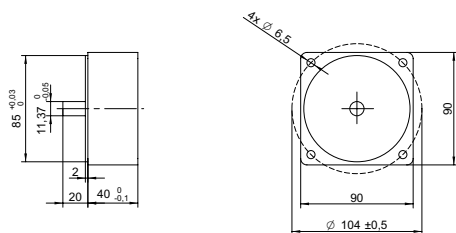
NOTES

1. See page 2 of this datasheet.
2. Gear motor torque limited by gearbox.
3. Gearbox nominal torque.
4. 20 mm from shaft.
5. IP20 without terminal box, IP54 with terminal box.
6. Cables/wires for connecting terminal box not included with AC induction motor.
7. Visit [www.transmotec.com](http://www.transmotec.com) to view datasheets.

WIRING DIAGRAM AC INDUCTION MOTOR<sup>6</sup>



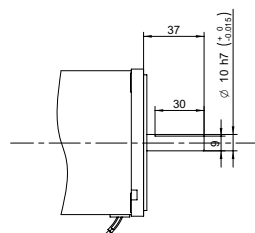
## DECIMAL GEARBOX<sup>1</sup>



### DECIMAL GEARBOX DATA

|                   |  |
|-------------------|--|
| Model designation | S90B-Y010  |
| Gear ratio        | 10:1   |
| Nominal torque    | Nm 20  |
| Description       | Connected between AC motor and existing gearbox to decrease the speed further than the gear ratio listed in the table. |

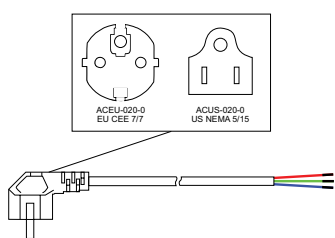
## OUTPUT SHAFT D-CUT



### DECIMAL GEARBOX DATA

Model designation Contact us for more information.

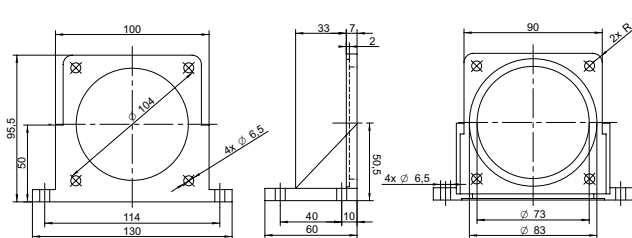
## POWER CABLE



### POWER CABLE DATA

|                   |                           |
|-------------------|---------------------------|
| Model designation | ACEU-020-0   ACUS-020-0   |
| Standard          | EU CEE 7/7   US NEMA 5/15 |
| Cable length      | m   ft 2   8              |

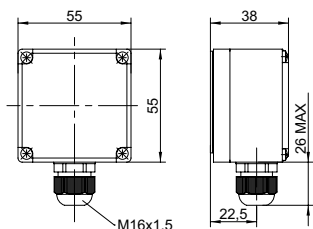
## MOUNTING BRACKET



### MOUNTING BRACKET DATA

|                   |          |
|-------------------|----------|
| Model designation | AMB-090  |
| Dimensions        | mm 90x90 |

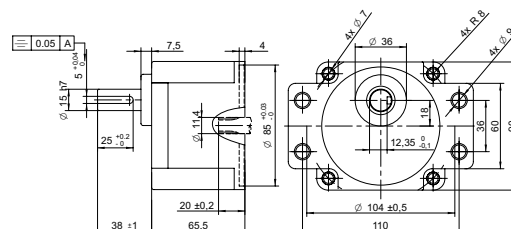
## TERMINAL BOX



### TERMINAL BOX DATA

Model designation See model no. designation to order correct part number.

## GEARBOX FLANGE MOUNTING



### GEARBOX FLANGE MOUNTING DATA

Model designation Contact us for more information.

## NOTES

1. Visit [www.transmotec.com](http://www.transmotec.com) to view datasheets.