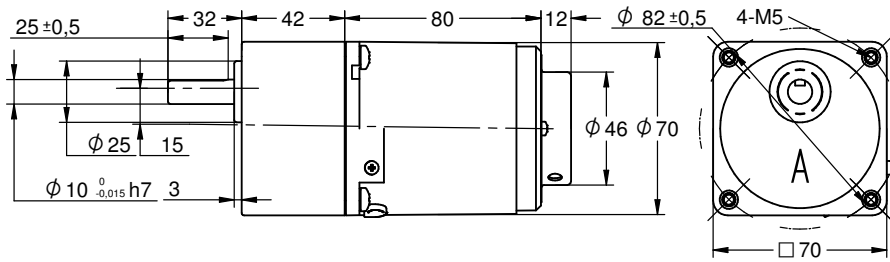


Motor model AIS-015W ← SOLD SEPARATELY → Gear box model S70A

DRAWING (mm)



PHOTO



MODEL NO. DESIGNATION

Motor model - Voltage - S/T C/B S= Single phase / T=Three phase C=Cable / B = Terminal box Example: AIS-006W-230-SC (*)

Gear box model - Gear ratio Example: S60A-050 (*)

*** ALL MOTORS AND GEAR BOXES ARE SOLD SEPARATELY. SELECT GEAR BOX FRAME SIZE SAME AS MOTOR FRAME SIZE. ASSEMBLY SCREWS ARE INCLUDED IN DELIVERY**

GEAR MOTOR DATA RATIO	3	3,6	5	6	7,5	9	1	12,5	15	18	20	25	30	36	40	50	60	75	90	100	120	150	180	200	250	300	500	600	750	
230VAC 50Hz 1 phase																														
Nominal rpm* 220 VAC	400	333	240	200	160	133	120	96	80	67	60	48	40	33	30	24	20	16	13	12	10	8	7	6	5	4	2	2	2	
Nominal rpm* 230 VAC	400	333	240	200	160	133	120	96	80	67	60	48	40	33	30	24	20	16	13	12	10	8	7	6	5	4	2	2	2	
Nominal Nm 220 VAC	0,3	0,3	0,5	0,6	0,7	0,9	1,0	1,2	1,5	1,7	1,8	2,2	2,6	3,2	3,5	4,4	4,8	5,9	7,1	7,9	9,5	11,9	14,3	15,8	17,7	21,2	35,4	42,5	53,1	
Nominal Nm 230 VAC	0,3	0,3	0,5	0,6	0,7	0,9	1,0	1,2	1,5	1,7	1,8	2,2	2,6	3,2	3,5	4,4	4,8	5,9	7,1	7,9	9,5	11,9	14,3	15,8	17,7	21,2	35,4	42,5	53,1	
120VAC 60Hz 1 phase																														
Nominal rpm* 110 VAC	400	333	240	200	160	133	120	96	80	67	60	48	40	33	30	24	20	16	13	12	10	8	7	6	5	4	2	2	2	
Nominal rpm* 120 VAC	400	333	240	200	160	133	120	96	80	67	60	48	40	33	30	24	20	16	13	12	10	8	7	6	5	4	2	2	2	
Nominal Nm 110 VAC	0,3	0,4	0,5	0,6	0,8	0,9	1,0	1,3	1,5	1,8	1,8	2,3	2,7	3,3	3,7	4,6	5,0	6,2	7,4	8,3	9,9	12,4	14,9	16,5	18,4	22,1	36,9	44,3	55,3	
Nominal Nm 120 VAC	0,3	0,4	0,5	0,6	0,8	0,9	1,0	1,3	1,5	1,8	1,8	2,3	2,7	3,3	3,7	4,6	5,0	6,2	7,4	8,3	9,9	12,4	14,9	16,5	18,4	22,1	36,9	44,3	55,3	
GEAR HEAD DATA																														
Efficiency (%)	81	81	81	81	81	81	81	81	81	81	73	73	73	73	73	73	66	66	66	66	66	66	66	66	59	59	59	59	59	
Max. torque (Nm)	5	5	5	5	5	5	5	5	5	5	5	5	5	5	5	5	5	5	5	5	5	5	5	5	5	5	5	5	5	
Radial F 20 mm shaft (N)	120	120	120	120	120	120	120	120	120	120	250	250	250	250	250	250	250	250	250	250	250	250	250	250	250	250	250	250	250	
Max. thrust load (N)	40	40	40	40	40	40	40	40	40	40	40	40	40	40	40	40	40	40	40	40	40	40	40	40	40	40	40	40	40	
Out rotation when in cw	cw	cw	cw	cw	cw	cw	cw	cw	cw	cw	ccw	ccw	ccw	ccw	ccw	ccw	cw	cw	cw	cw	cw	cw	cw	cw	cw	ccw	ccw	ccw	ccw	

GEAR MOTOR FEATURES	STANDARD	CUSTOMIZATION
Motor type	AC induction	Voltage
Insulation Class	130 (B)	155 (F)
Speed tolerance	± 5%	
Cables 6W-25W 40W-120W	AWG20 AWG-18 300 mm	Harness
Cables wiring	Table at bottom of page	Per request
Housing materials	Aluminium	
Gears and shaft material	40Cr	Shaft dimensions
Bearings types	Ball bearings	
Operating temperature	-10...+40 °C	-40...+40 °C
Manufacturing quality standards	ISO 9001	
RoHS compliance	Yes	
CE UL label	Yes 230 400 (VAC) 120 208	
IP rating cable terminal box	IP20 IP54	
Insulation Resistance 100 M Ω or more when 500 VDC megger is applied between the windings and the case after rated operation under normal ambient temperature and humidity.		
Dielectric Strength Sufficient to withstand 1.5 kV at 50 Hz or 60 Hz applied between the windings and the case for 1 minute after rated operation under normal ambient temperature and humidity.		
Temperature Rise Temperature rise of windings are 176°F (80°C) or less measured by the resistance change method after rated operation under normal ambient temperature and humidity.		

MOTOR DATA		
Base voltage (VAC)	230	120
Nominal voltage (VAC) A	220	110
Nominal voltage (VAC) B	230	120
Phase Frequency Hz	1 50	1 60
Number of poles	4	4
Output (W)	15	15
Nominal speed (rpm*) voltage A	1200	1200
Nominal speed (rpm*) voltage B	120	1200
Nominal torque mNm voltage A	120	125
Nominal torque mNm voltage B	120	125
Nominal current (A) voltage A	0,18	0,30
Nominal current (A) voltage B	0,20	0,32
Stall torque mNm voltage A	54	55
Stall torque mNm voltage B	54	55
Capacitor μF included in delivery	1,2	5
Weight motor Kg	1,2	1,2
Weight gear motor Kg	1,7	1,7

* Speed rpm motor / gear ratio 90 - 1350 base (voltage 230 VAC) -1650 base (voltage 120 VAC)

ELECTRIC WIRING CONNECTION	
VERSION C 1 PHASE	capacitor white-blue neutral N-red phase-white CW, -blue CWW
VERSION B 1 PHASE	capacitor U2-Z2 neutral N-U1 phase-U2 CW, -Z2 CWW
VERSION C B 3 PHASES	-blue, -red, -white. Swap a pair for inversed rotation