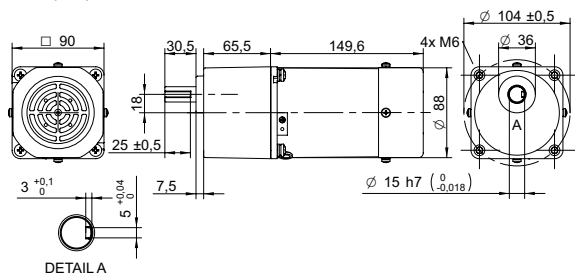
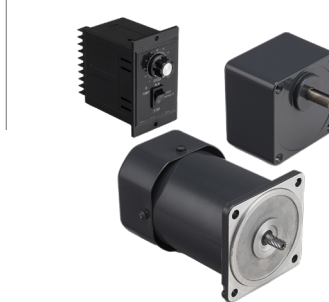
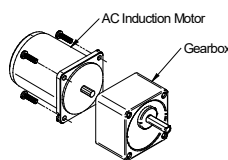


**DRAWING (mm)**

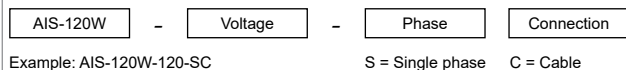


AC induction motor and gearbox also sold separately.

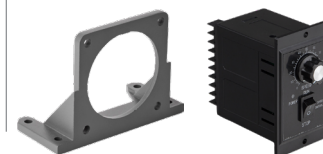
**PHOTO**



**MODEL NO. DESIGNATION**



**ACCESSORIES<sup>1</sup>**



C = customizations are offered on demand even for smaller quantities. Typical customizations are indicated with a green dot at column end. Please contact us for any customization request.

**GEAR MOTOR DATA**

		3	3.6	5	6	7.5	9	10	12.5	15	18	20	25	30	36	40	50	60	75	90	100	120	150	180	200
Gear ratio		3	3.6	5	6	7.5	9	10	12.5	15	18	20	25	30	36	40	50	60	75	90	100	120	150	180	200
Nominal torque	Nm	1.8	2.2	3.0	3.6	4.6	5.5	6.1	7.6	9.1	11	11	14	16	20 <sup>2</sup>	20 <sup>2</sup>	20 <sup>2</sup>	20 <sup>2</sup>	20 <sup>2</sup>	20 <sup>2</sup>	20 <sup>2</sup>	20 <sup>2</sup>	20 <sup>2</sup>	20 <sup>2</sup>	20 <sup>2</sup>
Nominal speed <sup>3</sup>	rpm	400	330	240	200	160	130	120	96	80	67	60	48	40	33	30	24	20	16	13	12	10	8	7	6
Nominal power	W	76	76	76	76	76	76	76	76	76	76	69	69	69	70	63	50	42	34	28	25	21	17	14	13
Gearb. nom. torq. <sup>4</sup>	Nm	20	20	20	20	20	20	20	20	20	20	20	20	20	20	20	20	20	20	20	20	20	20	20	20
Gearbox efficiency	%	81	81	81	81	81	81	81	81	81	81	73	73	73	73	73	73	66	66	66	66	66	66	66	66
Radial load <sup>5</sup>	N	500	500	500	500	500	500	600	600	600	600	700	700	700	700	700	700	700	700	700	700	700	700	700	700
Direction of rot.		CW	CW	CW	CW	CW	CW	CCW	CCW	CCW	CCW	CW	CW	CW	CW	CW	CW	CW	CW	CCW	CCW	CCW	CCW	CCW	CCW
Weight	kg	4.8	4.8	4.8	4.8	4.8	4.8	4.8	4.8	4.8	4.8	4.8	4.8	4.8	4.8	4.8	4.8	4.8	4.8	4.8	4.8	4.8	4.8	4.8	4.8

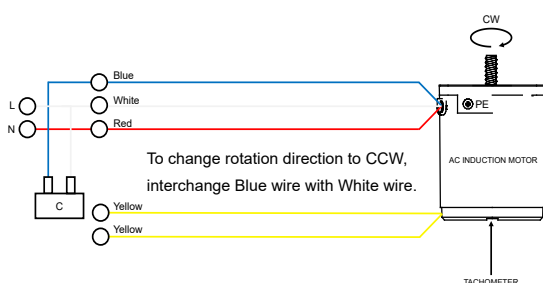
**OTHER GEAR MOTOR DATA**

Service life	h	10000
Performance tolerances		± 15
Operating temperature	°C	-10 to 40
IP rating		IP20
Manufacturing standard		ISO 9001
CE label   UL label		No   No

**GEARBOX DATA**

Shaft axial load	N	150
Bearing type		Ball bearing
Shaft material		40 Cr steel
Housing material		Aluminum
Material gear stage		40 Cr steel

**WIRING DIAGRAM AC INDUCTION MOTOR**



**AC INDUCTION MOTOR DATA**

Nominal voltage	V	120
No. of phases		1
Frequency	Hz	60
No. of poles		4
Nominal speed	rpm	1200
Nominal torque	mNm	750
Nominal current	A	1.9
Nominal power	W	120
Stall torque	mNm	720
Insulation class		B
Motor cable		AWG18
Signal cable		AWG22
Motor and signal cable length	mm	300
Capacitor included in delivery	µF	20
Insulation resistance	MΩ	100
Dielectric strength	kV	1.5
Max. winding temperature	°C	80
Weight	kg	3.3

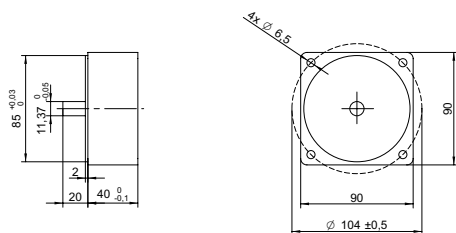
**GEAR MOTOR RANGE AIS-SERIES<sup>6</sup>**

Nominal voltage	V	See separate datasheet
Nominal power	W	See separate datasheet
Dimension	mm	See separate datasheet

**NOTES**

1. See page 2 of this datasheet.
2. Gear motor torque limited by gearbox.
3. Gear motor nominal speed based on AC induction motor nominal speed of 1200 rpm.
4. Gearbox nominal torque.
5. 20 mm from shaft.
6. Visit [www.transmotec.com](http://www.transmotec.com) to view datasheets.

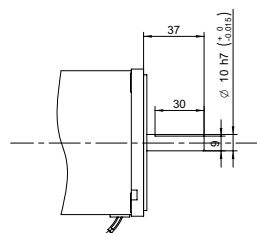
## DECIMAL GEARBOX<sup>1</sup>



### DECIMAL GEARBOX DATA

Model designation	S90B-Y010	
Gear ratio	10:1	
Nominal torque	Nm	20
Description	Connected between AC motor and existing gearbox to decrease the speed further than the gear ratio listed in the table.	

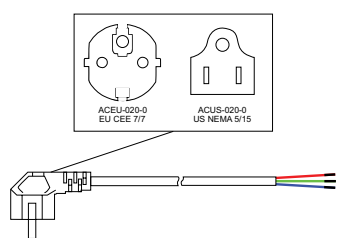
## OUTPUT SHAFT D-CUT



### DECIMAL GEARBOX DATA

Model designation Contact us for more information.

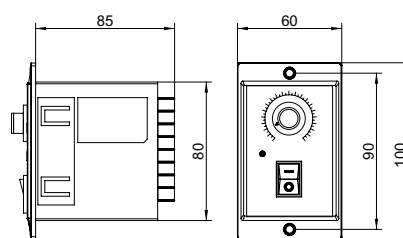
## POWER CABLE



### POWER CABLE DATA

Model designation	ACEU-020-0   ACUS-020-0	
Standard	EU CEE 7/7   US NEMA 5/15	
Cable length	m   ft	2   8

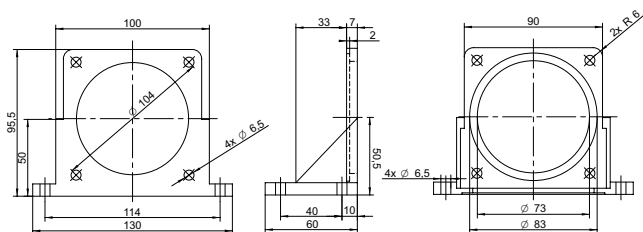
## SPEED CONTROLLER



### SPEED CONTROLLER DATA

Model designation	DA-110-120   DA-230-120	
Voltage	110   230	
Nominal power	W	120

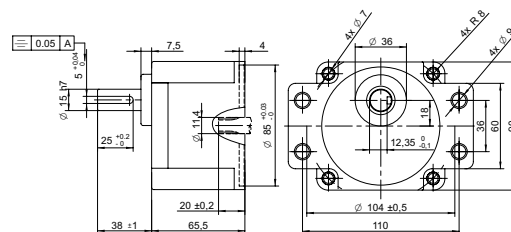
## MOUNTING BRACKET



### MOUNTING BRACKET DATA

Model designation	AMB-090	
Dimensions	mm	90x90

## GEARBOX FLANGE MOUNTING



### GEARBOX FLANGE MOUNTING DATA

Model designation Contact us for more information.

## NOTES

1. Visit [www.transmotec.com](http://www.transmotec.com) to view datasheets.