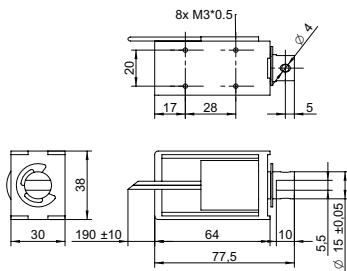


DRAWING (mm)



PHOTO



MODEL NO. DESIGNATION

F1564L - VOLTAGE

Example: F1564L-06V

ACCESSORIES

● C = customizations are offered on demand even for smaller quantities. Typical customizations are indicated with a green dot at column end. Please contact us for any customization request.

SOLENOID DATA

		C			
Duty cycle	%	100	50	25	10
Power	W	8	16	32	80
Max. time in energized state	s	∞	140	50	9

PERFORMANCE DATA F1564L-06V

		C			
Duty cycle	%	100	50	25	10
Individual voltages	V	6	8.5	12	19
Resistance	Ω	6			

PERFORMANCE DATA F1564L-12V

		C			
Duty cycle	%	100	50	25	10
Individual voltages	V	12	17	24	38
Resistance	Ω	24			

PERFORMANCE DATA F1564L-24V

		C			
Duty cycle	%	100	50	25	10
Individual voltages	V	24	34	48	76
Resistance	Ω	96			

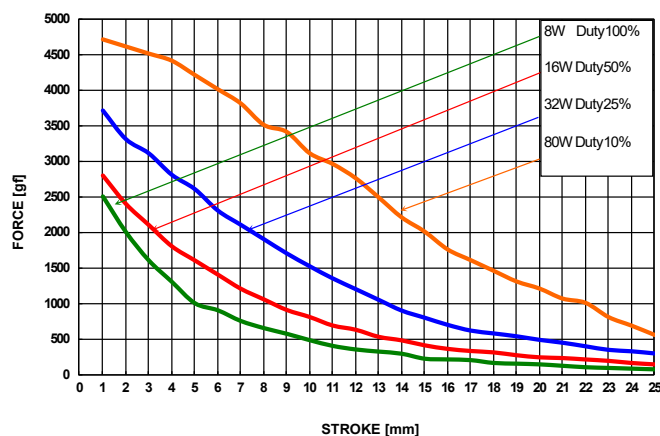
PERFORMANCE DATA F1564L-48V

		C			
Duty cycle	%	100	50	25	10
Individual voltages	V	48	68	96	152
Resistance	Ω	384			

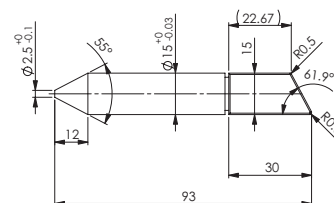
SOLENOID FEATURES AND STANDARD DATA

		C	
Type		Pull type DC solenoid	●
Nominal voltage range ¹	V	6 to 48	●
Loading force ²	N	3.6	
Cable		Flying wires	●
Cable length	mm	230	
Service life		At least 500000 single strokes	
Return spring		Yes	
Plunger material		Carbon steel 12L14	
IP rating		IP00	
Insulation class		B	
Weight	g	363	
Operating temperature	°C	-5 to 40	
Manufacturing standard		ISO9001:2008 ISO/TS 16949:2002	
CE label UL label		No No	

PERFORMANCE GRAPH



PLUNGER PROFILE



NOTES

- Nominal voltages, 100 % duty cycle.
- At 5 mm compression.