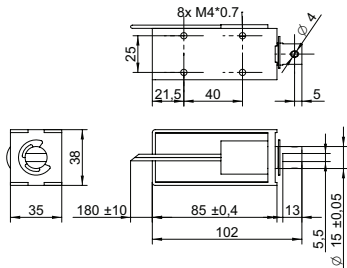


DRAWING (mm)



PHOTO



MODEL NO. DESIGNATION

F1585L - VOLTAGE

Example: F1585L-06V

ACCESSORIES

● C = customizations are offered on demand even for smaller quantities. Typical customizations are indicated with a green dot at column end. Please contact us for any customization request.

SOLENOID DATA

	%	100	50	25	10
Duty cycle	%	100	50	25	10
Power	W	13	25	51	127
Max. time in energized state	s	∞	160	80	32

PERFORMANCE DATA F1585L-06V

	%	100	50	25	10
Duty cycle	%	100	50	25	10
Individual voltages	V	6	8.5	12	19
Resistance	Ω	2.8			

PERFORMANCE DATA F1585L-12V

	%	100	50	25	10
Duty cycle	%	100	50	25	10
Individual voltages	V	12	17	24	38
Resistance	Ω	11			

PERFORMANCE DATA F1585L-24V

	%	100	50	25	10
Duty cycle	%	100	50	25	10
Individual voltages	V	24	34	48	76
Resistance	Ω	45			

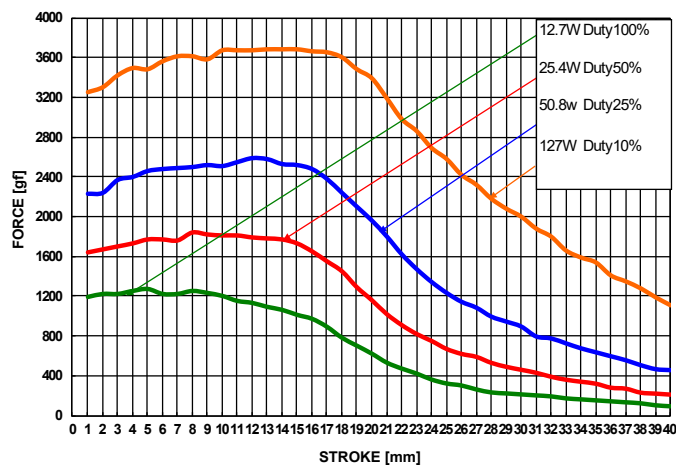
PERFORMANCE DATA F1585L-48V

	%	100	50	25	10
Duty cycle	%	100	50	25	10
Individual voltages	V	48	68	96	152
Resistance	Ω	181			

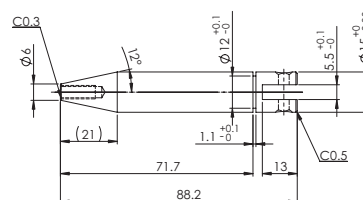
SOLENOID FEATURES AND STANDARD DATA

Type	Pull type DC solenoid		●
Nominal voltage range ¹	V	6 to 48	●
Loading force ²	N	3.6	
Cable	Flying wires		●
Cable length	mm	230	
Service life	At least 500000 single strokes		
Return spring	Yes		
Plunger material	Carbon steel 12L14		
IP rating	IP00		
Insulation class	B		
Weight	g	530	
Operating temperature	°C	-5 to 40	
Manufacturing standard	ISO9001:2008 ISO/TS 16949:2002		
CE label UL label	No No		

PERFORMANCE GRAPH



PLUNGER PROFILE



NOTES

1. Nominal voltages, 100 % duty cycle.
2. At 5 mm compression.