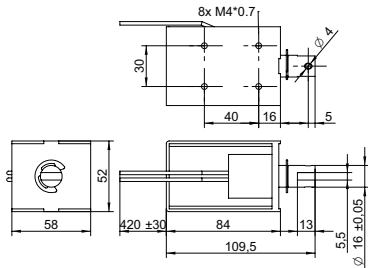


## DRAWING (mm)



## PHOTO



## MODEL NO. DESIGNATION

F1683L - VOLTAGE

Example: F1683L-06V

## ACCESSORIES

● C = customizations are offered on demand even for smaller quantities. Typical customizations are indicated with a green dot at column end. Please contact us for any customization request.

## SOLENOID DATA

		C			
Duty cycle	%	100	50	25	10
Power	W	16	32	64	160
Max. time in energized state	s	∞	250	120	40

## PERFORMANCE DATA F1683L-06V

		C			
Duty cycle	%	100	50	25	10
Individual voltages	V	6	8.5	12	19
Resistance	Ω	2.3			

## PERFORMANCE DATA F1683L-12V

		C			
Duty cycle	%	100	50	25	10
Individual voltages	V	12	17	24	38
Resistance	Ω	9			

## PERFORMANCE DATA F1683L-24V

		C			
Duty cycle	%	100	50	25	10
Individual voltages	V	24	34	48	76
Resistance	Ω	36			

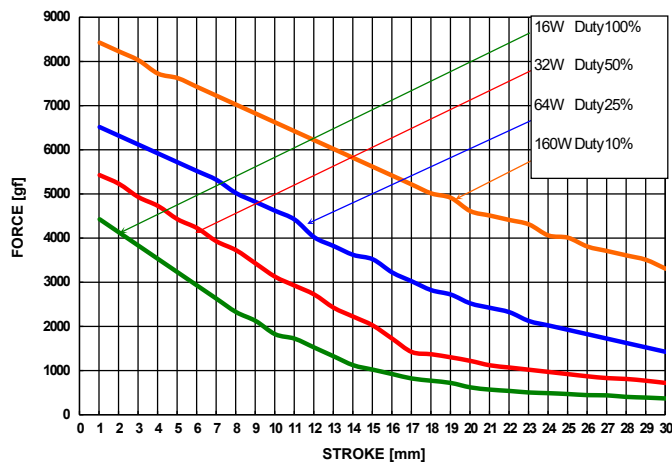
## PERFORMANCE DATA F1683L-48V

		C			
Duty cycle	%	100	50	25	10
Individual voltages	V	48	68	96	152
Resistance	Ω	144			

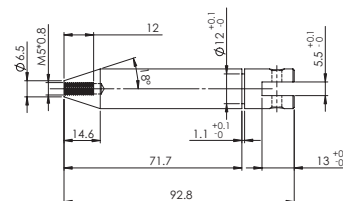
## SOLENOID FEATURES AND STANDARD DATA

		C	
Type		Pull type DC solenoid	●
Nominal voltage range <sup>1</sup>	V	6 to 48	●
Loading force <sup>2</sup>	N	2.5	
Cable		Flying wires	●
Cable length	mm	230	
Service life		At least 500000 single strokes	
Return spring		Yes	
Plunger material		Carbon steel 12L14	
IP rating		IP00	
Insulation class		B	
Weight	g	1100	
Operating temperature	°C	-5 to 40	
Manufacturing standard		ISO9001:2008   ISO/TS 16949:2002	
CE label   UL label		No   No	

## PERFORMANCE GRAPH



## PLUNGER PROFILE



## NOTES

1. Nominal voltages, 100 % duty cycle.
2. At 5 mm compression.