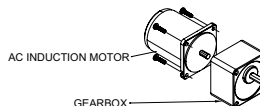
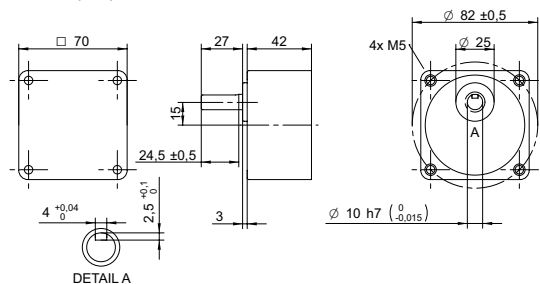


DRAWING (mm)



PHOTO



MODEL NO. DESIGNATION

S70A - GEAR RATIO

Example: S70A-003

ACCESSORIES¹



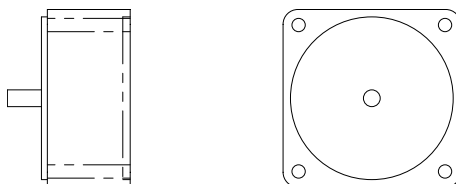
C = customizations are offered on demand even for smaller quantities. Typical customizations are indicated with a green dot at column end. Please contact us for any customization request.

GEARBOX DATA		C																												
Gear ratio		3	3.6	5	6	7.5	9	10	12.5	15	18	20	25	30	36	40	50	60	75	90	100	120	150	180	200	250	300	500	600	750
Gearb. nom. torq. ⁴	Nm	5	5	5	5	5	5	5	5	5	5	5	5	5	5	5	5	5	5	5	5	5	5	5	5	5	5	5	5	5
Gearbox efficiency	%	81	81	81	81	81	81	81	81	81	73	73	73	73	73	73	66	66	66	66	66	66	66	66	59	59	59	59	59	
Radial load ⁵	N	120	120	120	120	120	120	120	120	120	250	250	250	250	250	250	250	250	250	250	250	250	250	250	250	250	250	250	250	
Direction of rot.		CW	CW	CW	CW	CW	CW	CW	CW	CCW	CCW	CCW	CCW	CCW	CCW	CCW	CW	CW	CW	CW	CW	CW	CW	CW	CW	CCW	CCW	CCW	CCW	
Weight	kg	0.5	0.5	0.5	0.5	0.5	0.5	0.5	0.5	0.5	0.5	0.5	0.5	0.5	0.5	0.5	0.5	0.5	0.5	0.5	0.5	0.5	0.5	0.5	0.5	0.5	0.5	0.5	0.5	

OTHER GEARBOX DATA		C		SPUR GEARBOX RANGE S SERIES ⁴		NOTES	
Shaft axial load	N		40	Dimension	mm	See separate datasheet.	1. See page 2 of this datasheet.
Bearing type			Ball bearing	Gear ratio	W	See separate datasheet.	2. Gearbox nominal torque.
Shaft material			40 Cr steel	Compatible models	mm	See separate datasheet.	3. 20 mm from shaft.
Housing material			Aluminum				4. Visit www.transmotec.com to view datasheets.
Material gear stage			40 Cr steel				
Service life	h		10000				
Performance tolerances			± 15				
Operating temperature	°C		-10 to 40				
IP rating			IP20				
Manufacturing standard			ISO 9001				
CE label UL label			No No				

COMPATIBLE MOTORS ⁴		C							
Model		AI-015W-230-SC	AI-015W-400-TC	AI-015W-120-SC/B	AI-015W-208-TC	AIR-015W-230-SC	AIR-015W-120-SC	AIS-015W-230-SC	AIS-015W-120-SC
No. of phases		1	3	1	3	1	3	1	3
Frequency	Hz	50	50	60	60	50	60	50	60
Nominal speed	rpm	1200	1200	1500	1500	1200	1500	90 to 1200	90 to 1200
Nominal torque	mNm	130	130	110	110	130	110	120	130
Nominal current	A	0.2	0.08	0.32	0.12	0.23	0.42	0.2	0.32
Nominal power	W	15	15	15	15	15	15	15	15
Nom. speed at 50:1	rpm	24	24	29	29	24	29	24	24
Nom. torque at 50:1	Nm	4.6	4.6	3.8	3.8	4.6	3.8	4.4	4.6

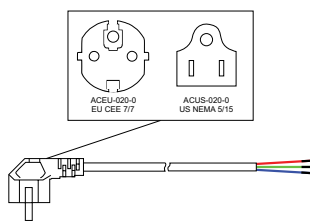
DECIMAL GEARBOX¹



DECIMAL GEARBOX DATA

Model designation	S60A-Y010	S70A-Y010	S80A-Y010	S90A-Y010	S90B-Y010
Gear ratio	10:1	10:1	10:1	10:1	10:1
Gearbox nominal torque	Nm 3	5	8	10	20
Description	Connected between AC motor and existing gearbox to decrease the speed further than the gear ratio listed in the table.				
Compatible models	AIR-006W	AIR-015W	AIR-025W	AIR-040W AIR-060W	AIR-090W AIR-120W

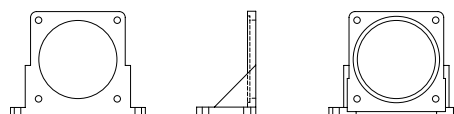
POWER CABLE



POWER CABLE DATA

Model designation	ACEU-020-0 ACUS-020-0	
Standard	EU CEE 7/7 US NEMA 5/15	
Cable length	m ft	2 8
Compatible models	All	

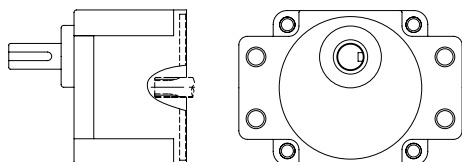
MOUNTING BRACKET



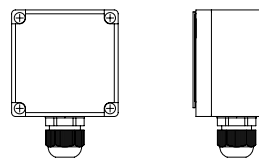
MOUNTING BRACKET DATA

Model designation	AMB-080	AMB-090
Dimensions	mm 80x80	90x90
Compatible models	AIR-025W AIR-040W AIR-060W	AIR-090W AIR-120W

GEARBOX FLANGE MOUNTING



TERMINAL BOX



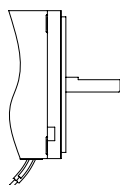
GEARBOX FLANGE MOUNTING DATA

Model designation	Contact us for more information.
Compatible models	AIR-090W AIR-120W

TERMINAL BOX DATA

Model designation	See model no. designation to order correct part number.
Compatible models	AIR-025W AIR-040W AIR-060W AIR-090W AIR-120W

OUTPUT SHAFT D-CUT



NOTES

1. Visit www.transmotec.com to view datasheets.

OUTPUT SHAFT D-CUT DATA

Model designation	Contact us for more information.
Compatible models	All