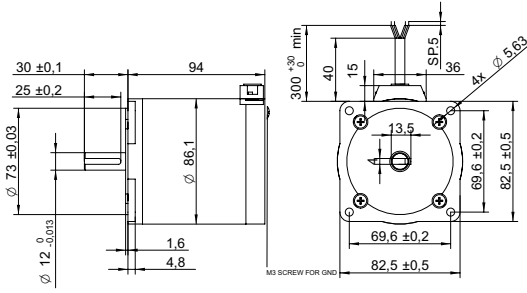


DRAWING (mm)



PHOTO



MODEL NO. DESIGNATION

SHW86 - STEP ANGLE - CURRENT

Example: SHW8694-18-280

OPTIONS DRIVER AND POWER SUPPLY



● C = customizations are offered on demand even for smaller quantities. Typical customizations are indicated with a green dot at column end. Please contact us for any customization request.

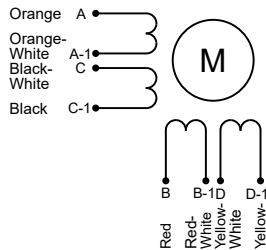
COMMON MOTOR DATA

COMMON MOTOR DATA		C
Step angle	°	1.8
Step angle accuracy ¹	%	± 5
Shaft material	X8CrNiS18-9 SUS303 ●	
Bearing type	Ball bearing ●	
Radial play ²	mm	0.02
Axial play ²	mm	0.08
Max. radial force ³	N	220
Max. axial force	N	60
Dielectric strength ⁴	V	600
Insulation resistance ⁵	MΩ	100
Operating temperature	°C	-20 to 50 ●
Insulation class	Class B	
IP rating	IP30 ●	
Connection harness	- ●	
Connector	Not in standard ●	

MODEL-SPECIFIC MOTOR DATA

MODEL-SPECIFIC MOTOR DATA		SHW8694-18-280
Model	SHW8694-18-280	
Graph	A	
Holding torque	Nm	4.8
Detent torque	Nm	0.18
Rotor inertia	gcm ²	1200
Current phase	A	2.8
Resistance phase	Ω	1.7
Inductance	mH	7.7
Length L	mm	94
Weight	kg	2.4

EXCITATION SEQUENCE TABLE



CW	A	C	B	D
1	●		●	
2		●	●	
3				●
4	●			●
1	●		●	

● = +Polarity

SPEED | TORQUE PERFORMANCE GRAPH PULL OUT

Graph	A	
Supply voltage	V	100
Current phase	A	4
Phase connection	Parallel connection	

NOTES

1. Full step no load.
2. 450 g load.
3. 20 mm from shaft.
4. AC, 1 second.
5. 500 V, DC.

