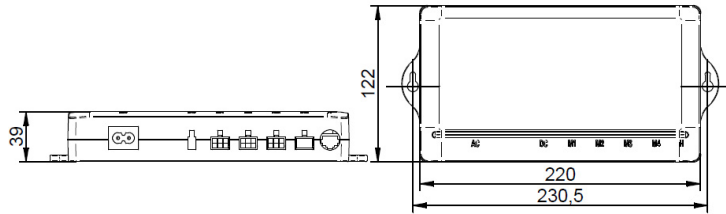


DDLS-3 Synchronous actuator control box

DRAWING
(mm)



PHOTO



MODEL NO. DESIGNATION

DDL S = (S) Synchronous model - Number of actuator axis

Example: DDLS-3

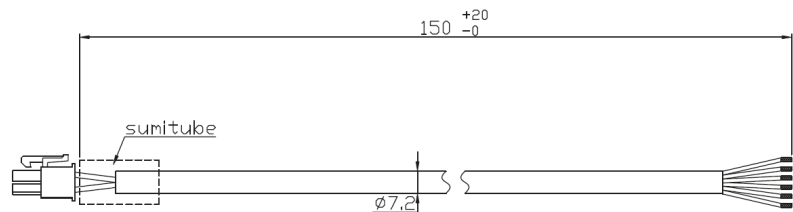
OPTIONAL HAND CONTROL AVAILABLE



GENERAL DATA

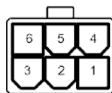
Product name	DDLS-3
Mode	Synchronous
Number of actuators	3
Compatible hand control	HDL-DDLS-3
Compatible actuators	DLA-DLB HALL (Standard version with flying wires leads. Adapter cable C-DDLS-M included)
Output voltage	24 VDC
Output current A	2.4
Overload protection current	N/A
Duty cycle	10%. max. 2 min. continuous operation in 20 min
Input voltage	100-240 VAC 50/60 Hz
Power cables	AC IEC C7 3000 mm. Cables with EU and US plugs are included
CE Marking	Yes
Ambient temperature deg. C	+5°C ~ +40°C
IP	IP20
Weight Kg	0.93
Connector to hand control	10P10C (RJ50) Jack
Connector to actuator	Molex 45732-0001 Jack
Body material/s	ABS + Fireproof
Color	Black

DRAWING OF INCLUDED ACTUATOR ADAPTER CABLE
(mm)

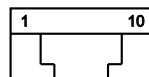


CONNECTOR PIN LAYOUT

Molex 45732-0001 Jack



10P10C (RJ50) Jack



OPERATION GUIDANCE SYNCHRONOUS CONTROL BOXES

- Connect all actuators adapter cables between the control box and the actuator
- All actuators must be connected to the control box for functional operation
- Press and hold down both hand control buttons 3 seconds to start automatic calibration process
- Press and continuously hold down the M button on the hand control for actuators operation
- Actuators will have a few mm stopping distance
- The actuators will stop automatically by its internal limit switches at end position

CONNECTOR PIN CONFIGURATION

	Molex 45732-0001	10P10C (RJ50)
1	GND White	
2	Vin Yellow	5V
3	M- Black	
4	Hall 2 Green	
5	Hall 1 Blue	1 Up M1
6	M+ Red	
7		
8		1 Down M1
9		
10		